

Card Data Format

CARD DATA STRING

TRACK 1			TRACK 2			TRACK 3		
SS	TRACK1 DATA	ES	SS	TRACK2 DATA	ES	SS	TRACK3 DATA	ES
%	TRACK1 DATA	?	;	TRACK2 DATA	?	+	TRACK3 DATA	?

TRACK 1

%	CARD ID	?
---	---------	---

1. SS is the start sentinel (%).
2. ES is the end sentinel (?).
3. Card Id up to 76 alphanumeric data characters.

Track 1 IATA	
Bits Per Inch	210
Bits Per Character	7
Alphanumeric Characters	79

TRACK 2

;	CARD ID	?
---	---------	---

1. SS is the start sentinel (;).
2. ES is the end sentinel (?).
3. Card Id up to 37 numeric data characters.

Track 2 ABA	
Bits Per Inch	75
Bits Per Character	5
Numeric Characters	40

TRACK 3

+	CARD ID	?
---	---------	---

1. SS is the start sentinel (+).
2. ES is the end sentinel (?).
3. Card Id up to 104 numeric data characters.

Track 3 Thrift	
Bits Per Inch	210
Bits Per Character	5
Numeric Characters	107

Note: Track 3 can read both ISO TK3 format and ISO TK1 format.

Option

iBUTTON DATA STRING:

STATUS	DS1990A 48-Bit Serial Number
--------	------------------------------

STATUS	61 : iButton Press 75 : iButton Release
--------	--

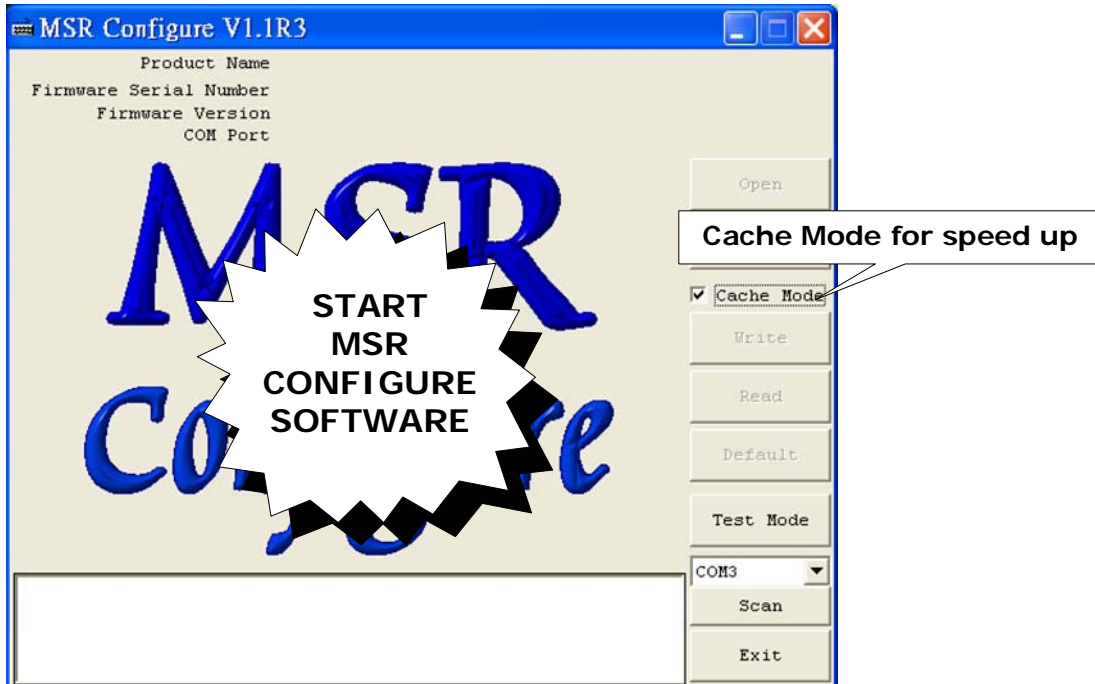
a	@	DS1990A 48-Bit Serial Number	?
---	---	------------------------------	---

u	@	DS1990A 48-Bit Serial Number	?
---	---	------------------------------	---

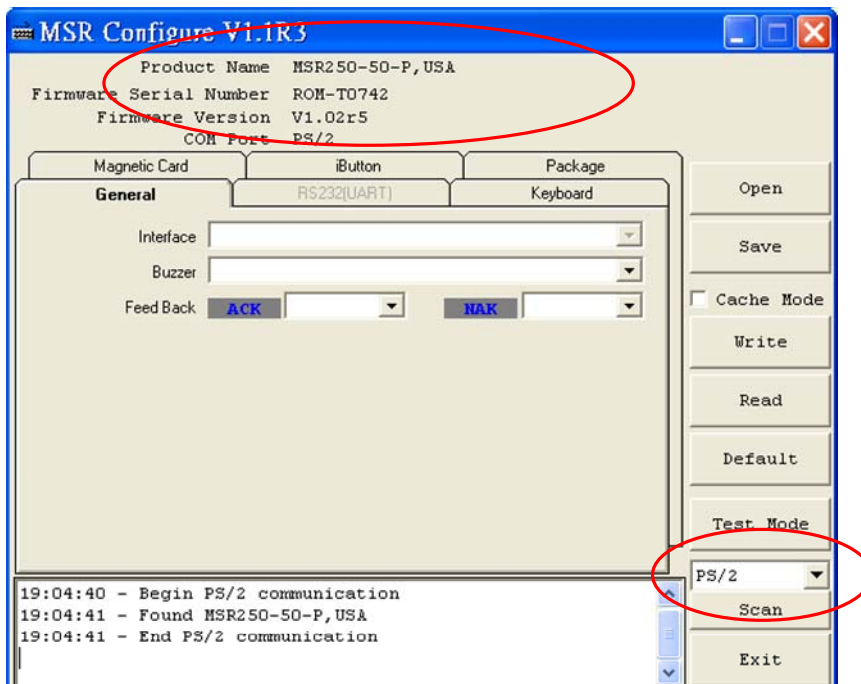
Demo Software

Apply the bundled disk no. 5296 to begin with the demo software.

STEP 1 : Run MSR Configure



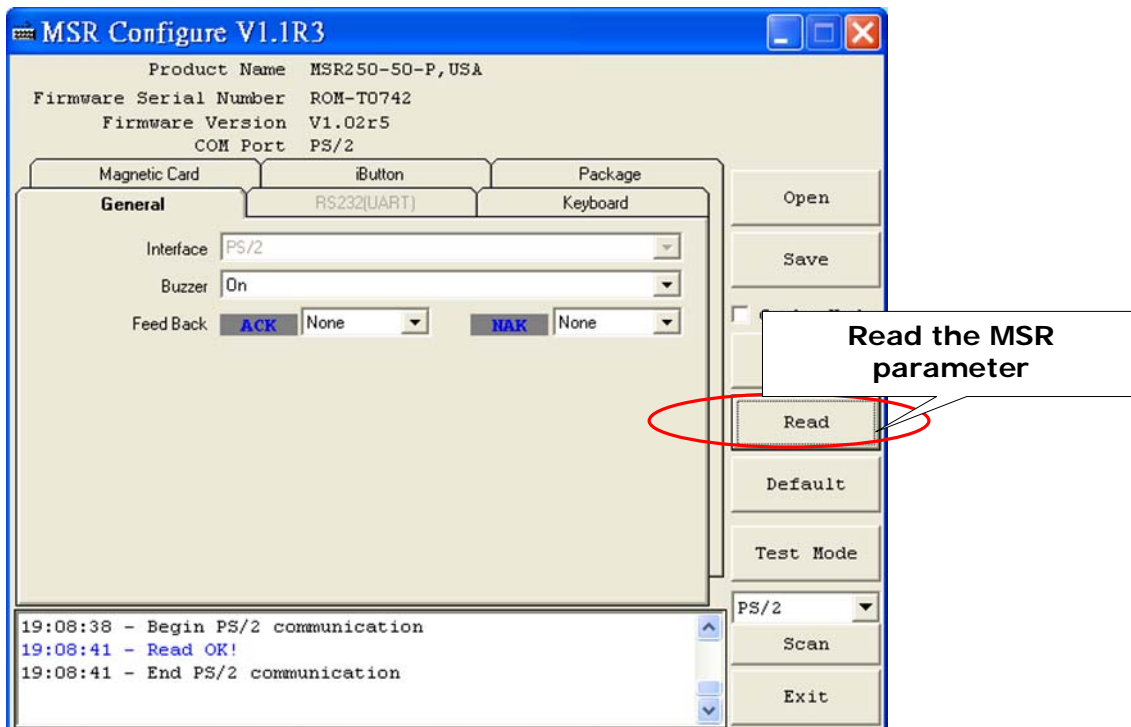
STEP 2 : Choose PS/2 or COM port and press "Scan", connect the MSR220/250 reader.



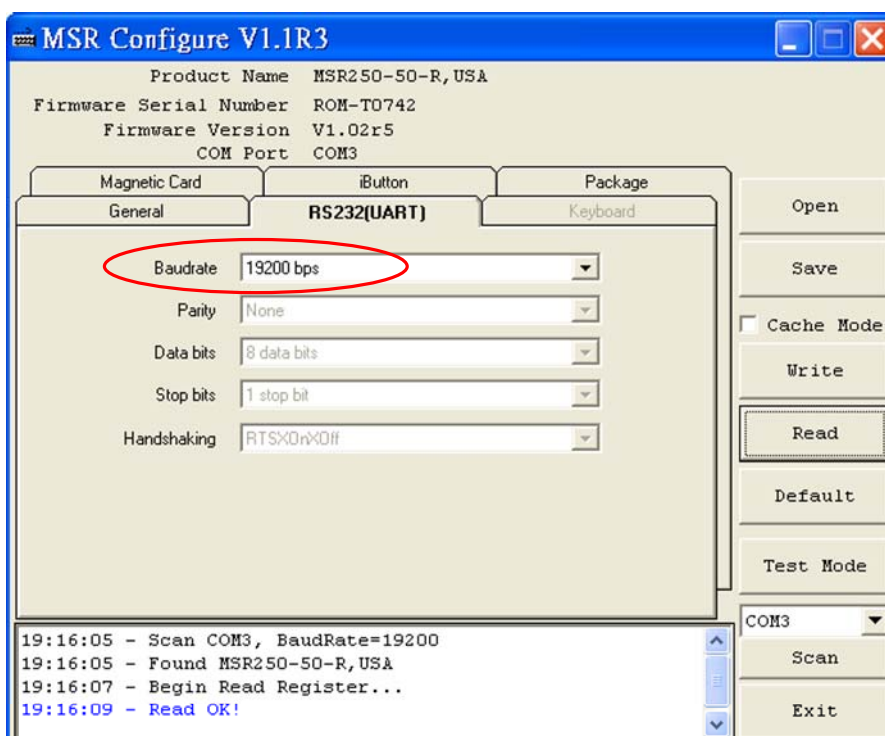
STEP3 : Click "Read" ,scan the MSR220/250 reader parameter.

General :

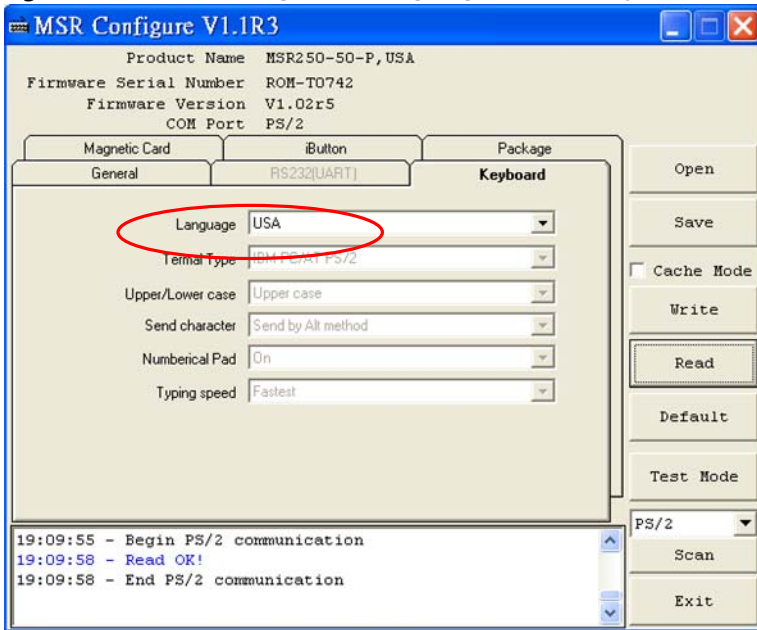
- Interface** : MSR Interface is being detected.
- Buzzer** : Choose buzzer enable or disable.
- Feed Back** : Set MSR output data ,waiting for feedback from the terminal.
Show 'Error' message if no reaction from MSR



RS232(UART) : Setting MSR communication parameter ,when RS232 and serial USB enable .



Keyboard : Setting MSR language ,when keybpard enable .



Package : Setting MSR & iButton data output package .

Data Format :



MSR Data Package :



iButton Data Package :

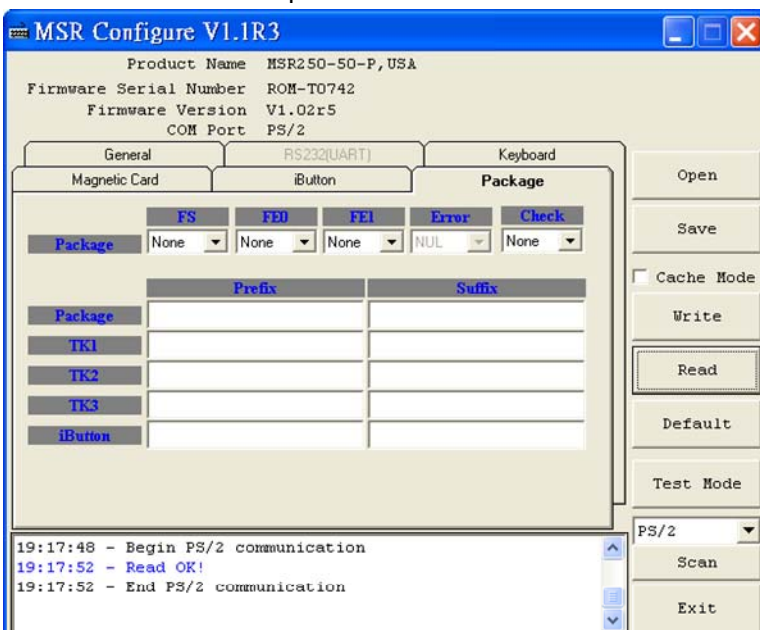


FS : Package leading character.

FEO : Package ending character.

FE1 : Package ending character.

check : Bit check up.



iButton : Set iButton data format .

Data format :



SS : Start Sentinel

ES : End Sentinel

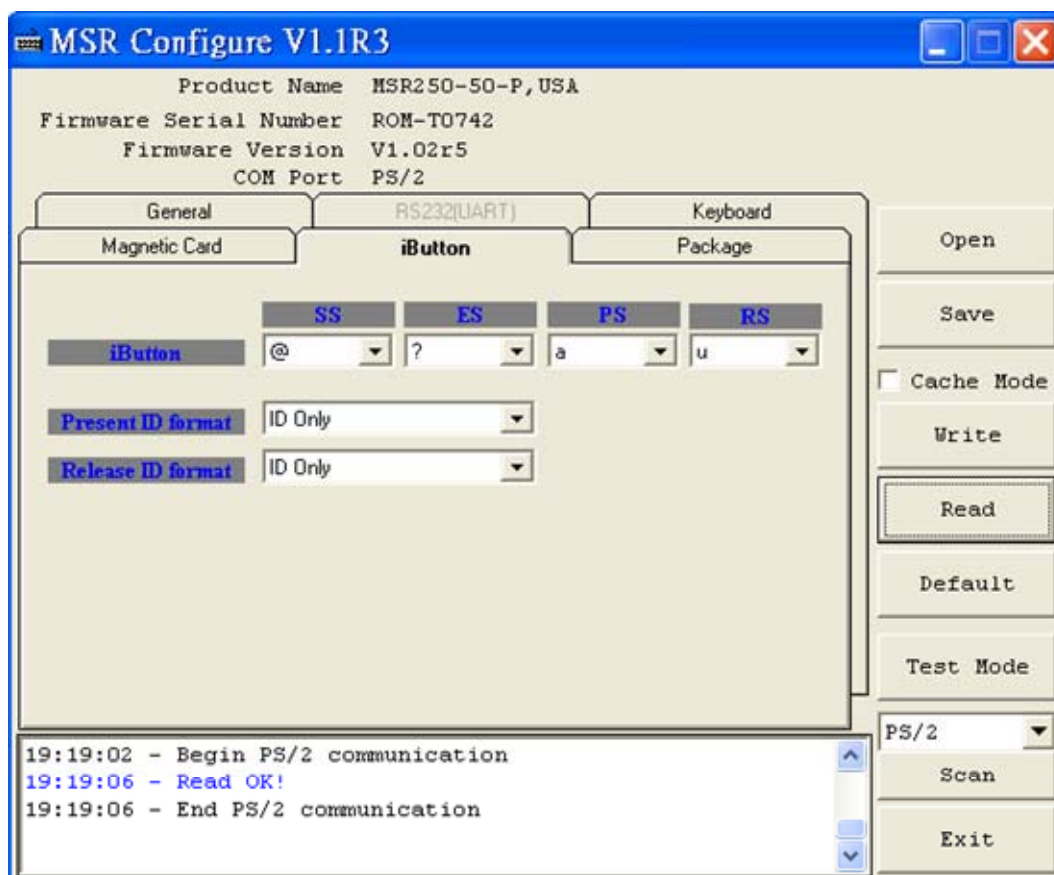
PS : iButton present prompt character.

RS : iButton Release prompt character.

Present ID format : Set present iButton output ID format .

Release ID format : Set release iButton output ID format .

Family Code : Terms for iButton series.



Magnetic Card : Set MSR data format and data output parameter .

Data format :



MSR package :



Mark Code : Leading character to set up output data.

Decode Mode : To decode magstripe data.

Decode Standard : To decode magstripe format.

7Bit : 7 Bits Per Character data.

ABA : 5 Bits Per Character data .

JIS2 : JIS2 data format.

AAMVA : AAMVA data format .

IBM : IBM data format .

SS : Start Sentinel

ES : End Sentinel

TK ESO : Ending prompt character .

TK ES1 : Ending prompt character .

Track Output Order : To set up track data in turn.

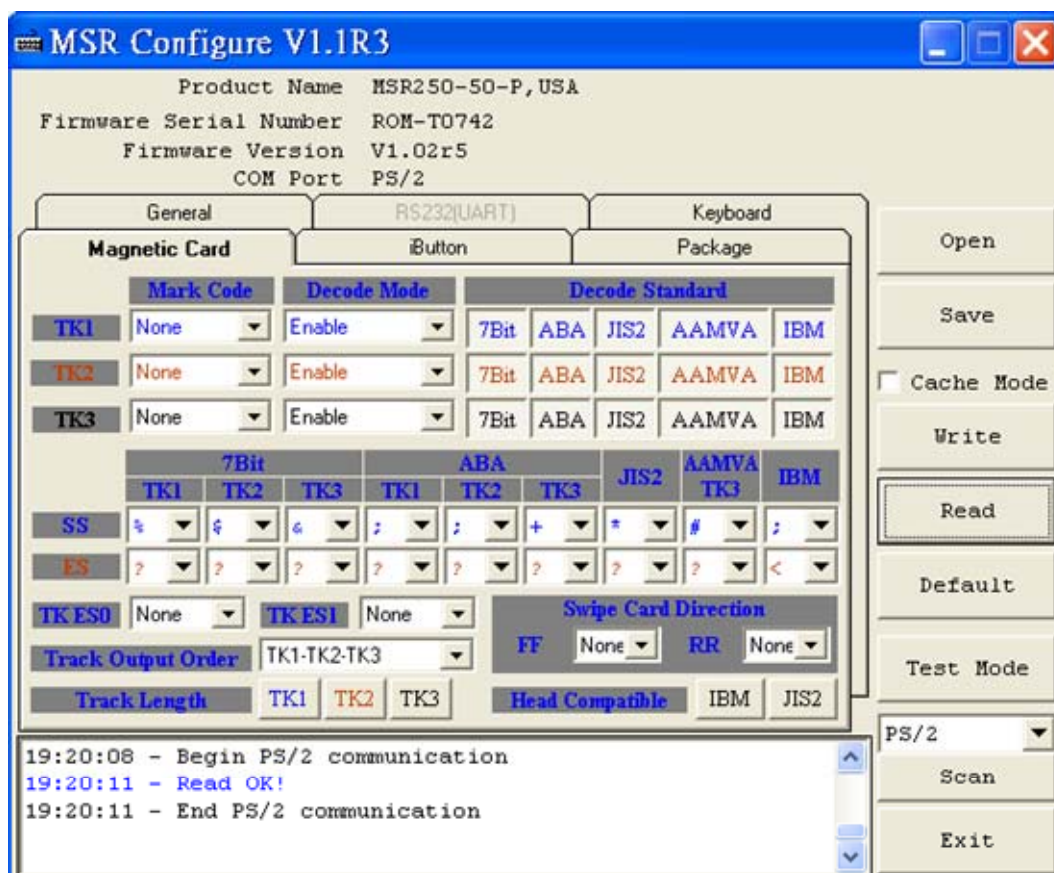
Track Length : To set up track data length.

Swipe Card Direction : To set up prompt character for direct/reverse side card swipe prompt character.

FF : To set up direct side cardswipe prompt character.

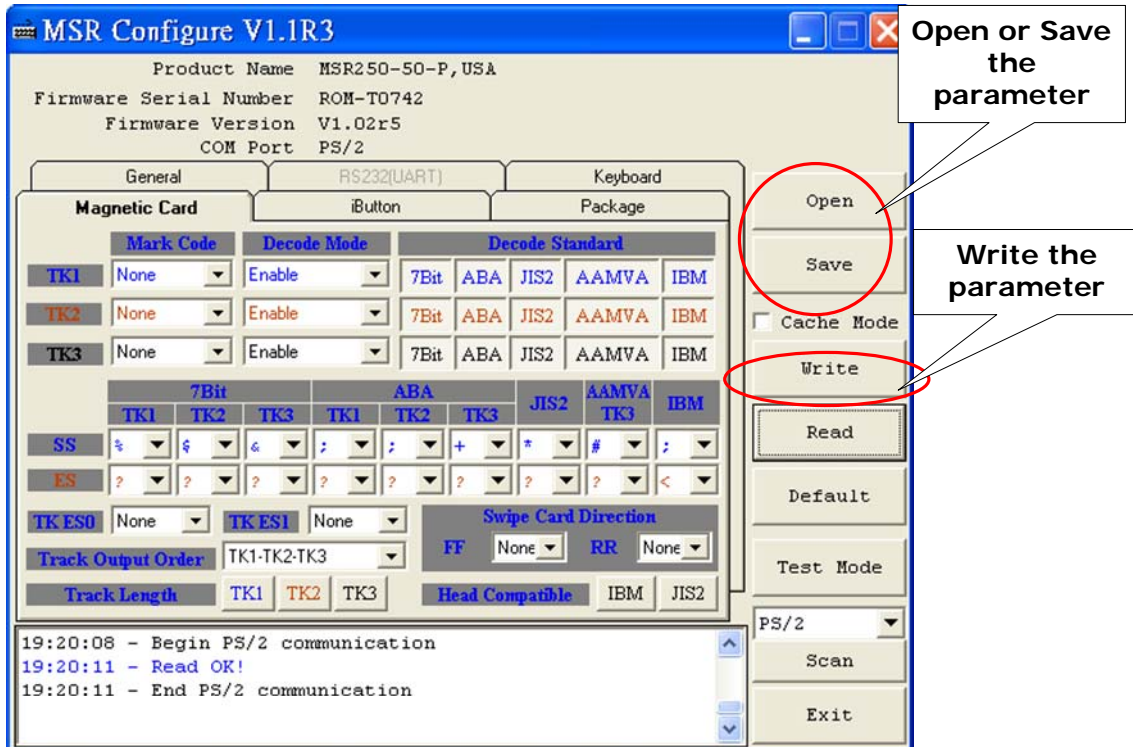
RR : To set up reverse side cardswipe prompt character.

Head Compatible : To set up the decoding work for IBM or JIS2 data output at one time only.



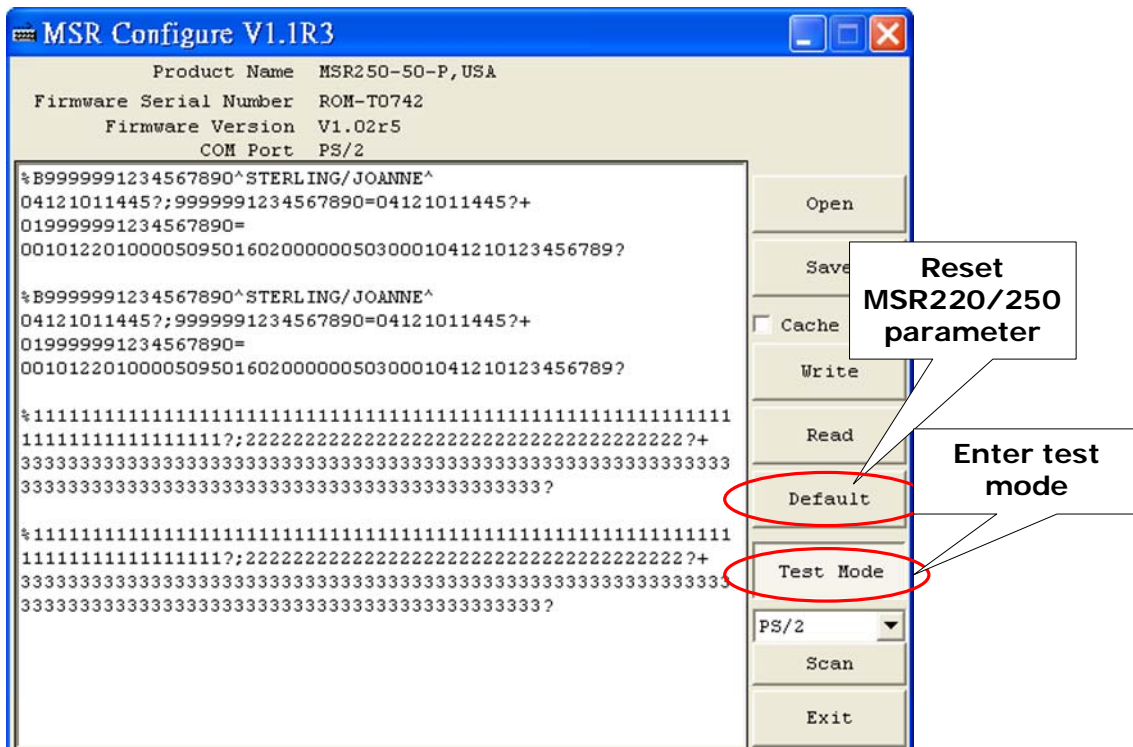
STEP4 : Click "Write" ,write the parameter to MSR220/250 reader .
 Click "Open or Save" open or save your choose parameter to file.

PS. Same as to when MSR220/250 reader is in RS232 interface mode,
 Keyboard function will be in disable mode .When MSR220/250 reader
 is in Keyboard function, RS232 interface will be in disable mode.

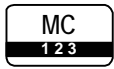


STEP5 : Click "Test Mode" can test the MSR220/250 .

STEP6 : Click "Default" can reset MSR220/250 parameter.



Specifications



Magnetic Stripe Card :

TRACK 1 / IATA / 210 bpi / 79 Alphanumeric Characters
TRACK 2 / ABA / 75 bpi / 40 Numeric Characters
TRACK 3 / Thrift / 210 bpi / 107 Numeric Characters



RS232 Interface :

RS232 , Half-Duplex , 8N1 , 1200~19200 bps



USB Interface :

RS232 , Half-Duplex , 8N1 , 1200~19200 bps



USB to PS/2 Interface :

USB Human Interface Device (HID) for PS/2



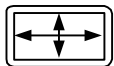
PS/2 Interface :

PC keyboard interface , Scan code



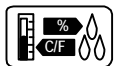
Power Supply :

DC 5V, 300mA



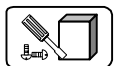
Dimensions :

D 23 x W 90 x H 24 mm (MSR220 without cover)
D 33 x W 100 x H 31 mm (MSR250 with cover)



Environment :

Operating Temp : 0 ~ 55 Deg.C
Storage Temp : -10 ~ 55 Deg.C
Humidity : 10 ~ 90 % relative



Mounting :

Portable or Any surface