


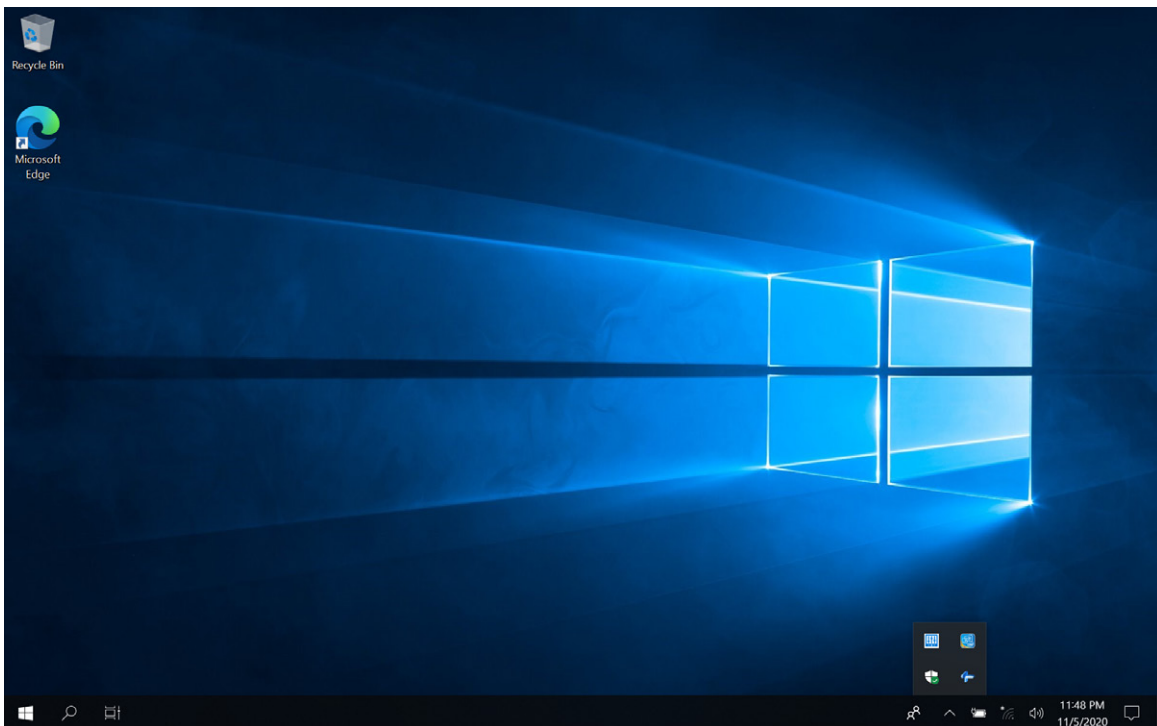
Button Manager for DT Research Systems Operation Guide

Introduction

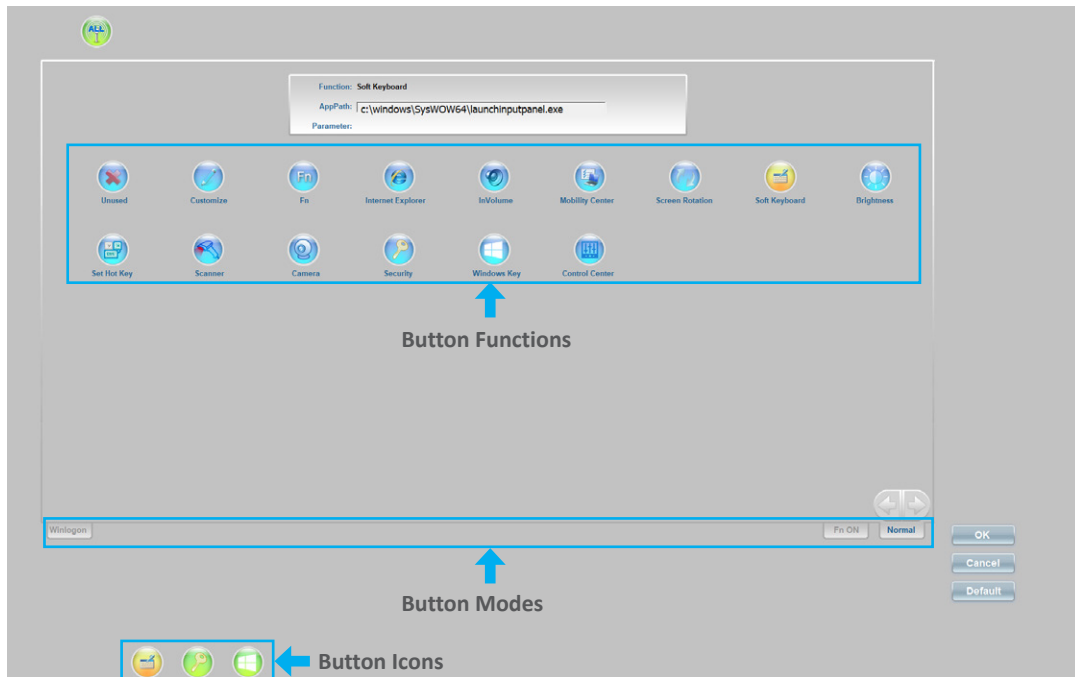
The Button Manager is the User Interface to manage the physical buttons on DT Research computing system products. Most of the systems have physical buttons that allow users to quickly access certain functions, like Barcode Scanner trigger, OnScreen keyboard, Windows Key trigger, adjust system volume/screen brightness, and launch user-defined applications. Pre-defined buttons are set up for most common uses.

Access to Button Manager from Windows Desktop

The Button Manager application can be launched from the **Windows System Tray**. Tap  to open the Button Manager configuration user interface.



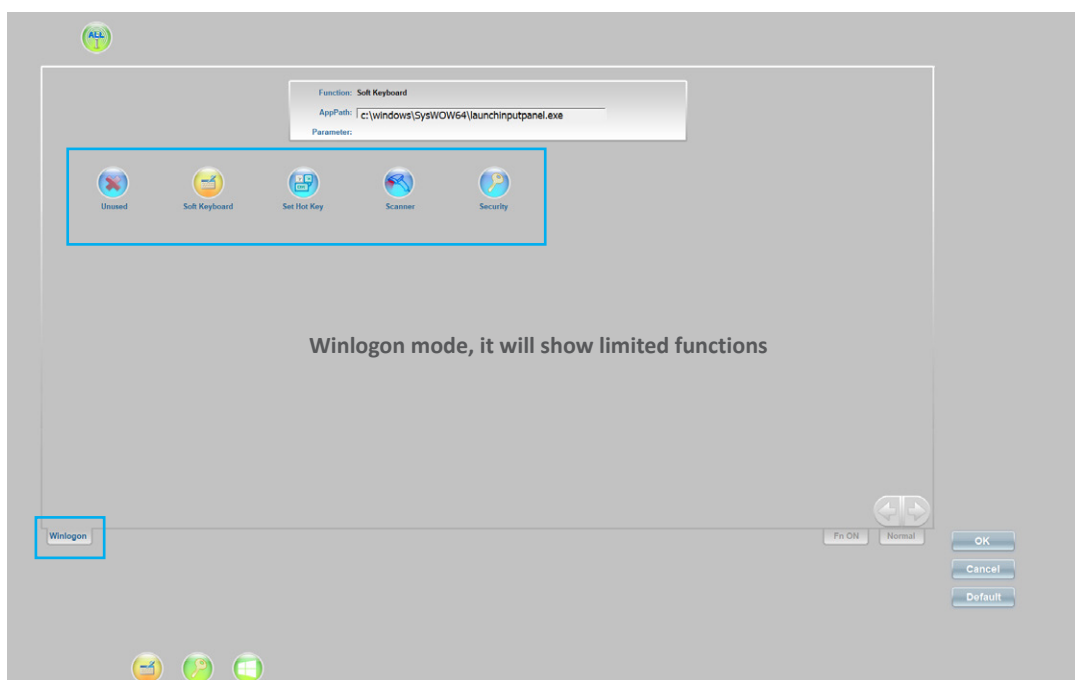
The configure user interface has three major parts: Button Icons, Button Functions, Button Modes.



The Button Icons are located close to physical button locations. The icons show current assigned function. Button functions section will list all available functions for current system model.

NOTE: Different models may have different functions available.

Button modes: The button assignment for Windows logon page and normal desktop page is different. Not all functions are available for Windows logon mode. And if the system has more physical buttons, you can assign one button as "Fn" button, to make other buttons have an another set of functions by holding down the Fn button.

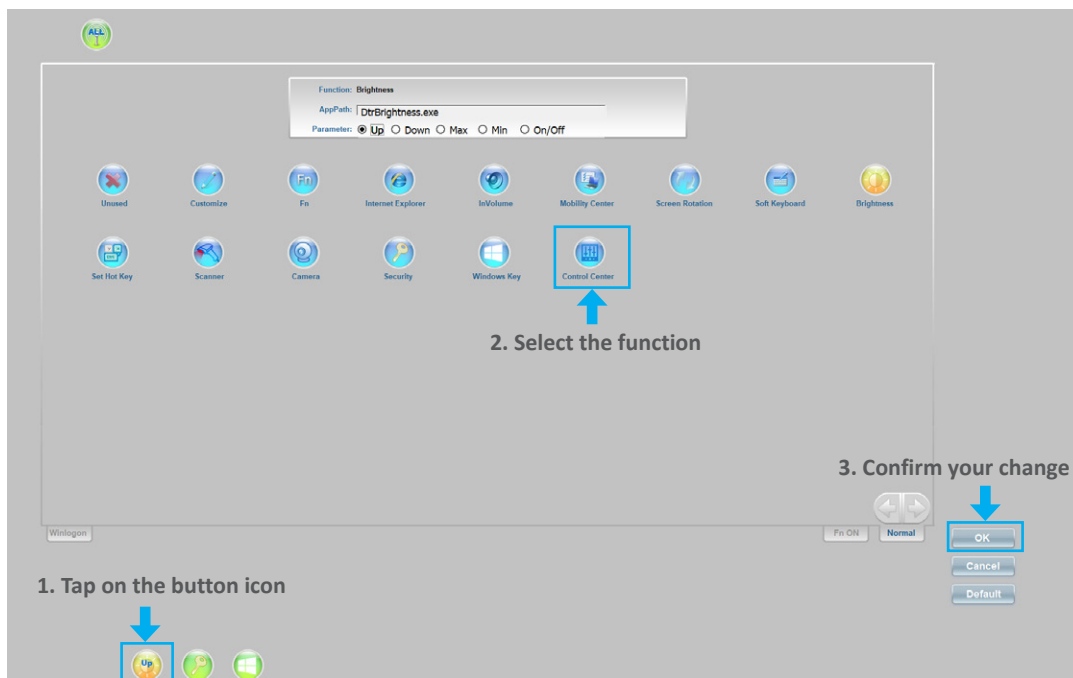


Assign a Function to a Button




Buttons are pre-defined for most common uses. To view/change the function assigned to a button:










1. Tap on the button icon you want to work on, the current assigned function will be highlighted in the button function area.
2. Select the function to assign in the button function area by tapping on the related icon.
3. If the selected function has a 2nd level parameter, you will be prompted to input your options. For example; Brightness has the options of Up, Down, Max, Min, On/Off.
4. Once you confirm your option, the assignment is done. You can continue to configure the rest of the buttons.




By default, all functions are configured for “Normal” desktop mode. If you want to assign a button to function under “Winlogon” mode, you need to switch the mode to “Winlogon”. Then follow the above “Assign a function to a button” to change any assignment of the button.



Button Function Descriptions

 <p>Unused</p>	<p>A button with no function. You can use this function to disable one button.</p>
 <p>Customize</p>	<p>A button to launch an application within parameter. 2nd option to input necessary application path and parameter.</p> <div data-bbox="472 1753 1327 1883" style="border: 1px solid gray; padding: 5px;"> <p>Function: Customize</p> <p>AppPath: <input type="text"/> Browsing...</p> <p>Parameter: <input type="text"/></p> </div>
 <p>Fn</p>	<p>A button to define as Fn button. It needs to be combined with other buttons to function (not recommended unless you need more button functions than there are physical buttons).</p>

 Internet Explorer	A button to launch Internet Explorer.
 InVolume	A button to adjust system sound volume. 2 nd option to choose volume Up, Down, and Mute. <div data-bbox="469 353 1324 483" style="border: 1px solid gray; padding: 5px; margin-top: 10px;"> Function: InVolume AppPath: <input type="text" value="c:\windows\SysWOW64\adjsound.exe"/> Parameter: <input checked="" type="radio"/> Up <input type="radio"/> Down <input type="radio"/> Mute </div>
 Mobility Center	A button to launch “Mobility Center”.
 Screen Rotation	A button to trigger screen rotation; 2 nd option to choose rotation degree of 90, 180, 270. <div data-bbox="469 705 1324 835" style="border: 1px solid gray; padding: 5px; margin-top: 10px;"> Function: Screen Rotation AppPath: <input type="text" value="c:\windows\SysWOW64\screenrotate.exe"/> Parameter: <input checked="" type="radio"/> 90 degree <input type="radio"/> 180 degree <input type="radio"/> 270 degree </div>
 Soft Keyboard	A button to launch onscreen keyboard.
 Brightness	A button to change brightness settings; 2 nd option to choose brightness Up, Down, Maximum, Minimum, and screen On/Off. <div data-bbox="469 1099 1324 1229" style="border: 1px solid gray; padding: 5px; margin-top: 10px;"> Function: Brightness AppPath: <input type="text" value="DtrBrightness.exe"/> Parameter: <input checked="" type="radio"/> Up <input type="radio"/> Down <input type="radio"/> Max <input type="radio"/> Min <input type="radio"/> On/Off </div>
 Set Hot Key	A button to set Hot Key; 2 nd option to choose Ctrl, Alt, Shift, and the key. <div data-bbox="520 1305 1273 1570" style="border: 1px solid gray; padding: 10px; margin-top: 10px;"> <div style="display: flex; justify-content: space-between;"> Set Hot Key ✕ </div> <div style="margin-top: 10px;"> <input type="checkbox"/> Ctrl + <input type="checkbox"/> Alt + <input type="checkbox"/> Shift + <div style="border: 1px solid gray; padding: 2px; display: inline-block;"> C D E F </div> </div> <div style="display: flex; justify-content: center; margin-top: 10px;"> <input type="button" value="OK"/> <input type="button" value="Cancel"/> </div> </div>
 Scanner	A button to trigger barcode scanner embedded in system.
 Camera	A button to trigger Camera. It only works with DTR Camera app (DTMSCAP).

 Security	A button to trigger system Security key (Ctrl-Alt-Del combination).
 Windows Key	A button to trigger “Windows Key”.
 Control Center	A button to launch “Control Center”, a DTR application to provide major system setting controls.