

- To register this signage appliance to another WebDT Content Manager Server, navigate to Start | All Programs | DT Research | WebDT Signage Player | Register Player Again, and then the Player Registration dialog will be launched. Fill in all fields to register. Click OK to register and connect to the preferred WebDT Content Manager Publish Server.
- Please refer to documentation included in the DVD of your package to start managing your content, playlists and schedules via WebDT Content Manager.

Registration Information:

Player name: Leave default name or give a new name

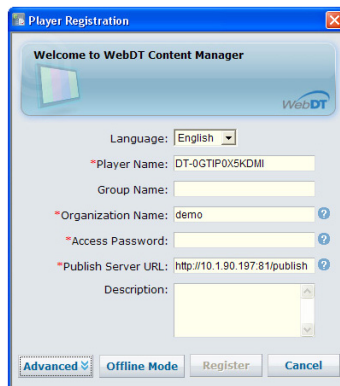
Group name: If you did not create any group in WCM server yet, leave it blank now

Organization name: my site (default)

Access Password: 123456 (default)

Publish Server URL:

http://(server IP address): (port number)/publish
or, http://localhost: (Port number)/publish



For More Information:

Browser Requirements

To check browsers and versions supported, please visit:

www.signage.dtri.com/wcm6/browser.html

WCM 6 Pro Online Tutorial

The online tutorial will help you to get started with WCM6 Pro quickly and easily, please visit:

www.signage.dtri.com/wcm6/tutorial.html

Download Documentation

Download the latest WCM6 Pro supporting documents from:

www.signage.dtri.com/wcm6/download.html

FAQ

Learn more technical details about WCM6 from:

www.signage.dtri.com/wcm6/faq.html

System Recovery

If the operating system is corrupted, please follow our instructions to restore your OS and applications:

www.signage.dtri.com/wcm6/recovery.html



DT Research, Inc.

2000 Concourse Drive, San Jose, CA 95131 <http://www.dtresearch.com>
Copyright © 2014, DT Research, Inc. All Rights Reserved. DT Research is a registered trademark of DT Research, Inc.
BOG082914DT135DSA1350ENG

DT Research

*Digital Signage Appliance
Embedded Controller/ System*

SA1350/ DT135D

BASIC OPERATION GUIDE



ENGLISH

INTRODUCTION

Thank you for acquiring the latest addition to DT Research's product line - the SA1350/DT135D, featuring compact, robust designs and powered by the high-performance, energy-efficient AMD Fusion processor. Combined with DT Research's application-specific software, these products provide digital signage, cloud computing, or embedded controller computing solutions. These products also support major embedded operating systems such as Linux, Microsoft® Windows® XP Embedded, or Windows® Embedded Standard 7 for a variety of computing needs.

Package Contents

- 1 One SA1350/ DT135D
- 2 AC/DC Power Adapter
- 3 VESA-compliant Mounting Bracket
- 4 WebDT Content Manager 6 Pro installation DVD (SA1350 only)
- 5 Documentation

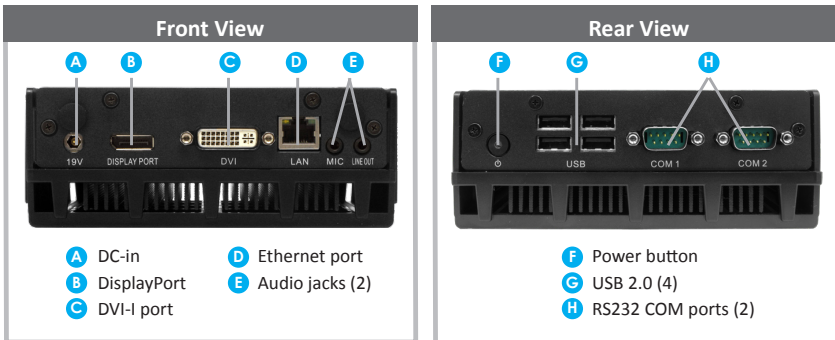


Note: The actual package contents may vary depending on the product acquired.

Precautions

- Always exercise care when operating and handling.
- Never disassemble any portion of the enclosure. It will void any product warranty.
- Do not use any AC/DC adapter other than the one provided with the device or acquired from the manufacturer or its partners.
- In the unlikely event that smoke, abnormal noise, or strange odor is present, immediately power down the product and disconnect all power sources.
- Please report the problem to your device provider immediately.

I/O Ports



Powering ON and OFF

The Power Button is located in the front of the product. The Power Button may be configured to function differently depending on the power options of the operating system. In general, to turn on the product, push and release the Power Button on the front bezel. The adjacent power LED will be lit (blue) and the corresponding interface will be displayed on the display monitor.

To turn off the device, again depending on software operating system, push and release the Power Button or use a software shutdown interface. In the event of system lockup, the Power Button may be used to perform a reset on the device. To do that, push and hold the Power Button for at least 4 seconds. The system will shut down and all unsaved work may be lost. Pushing on the Power Button again will restart the device.

NOTE: The SA1350 is programmed to Power On automatically when power is first applied or re-established.

Device Ports

The product features an optimal set of I/O ports while preserving the compact size of the system. The DisplayPort and DVI-I connectors, COM ports, Network (10/100/1000 BaseT Ethernet), and Power ports are supplemented by a set of four USB 2.0 and two Audio ports. Through its USB ports, the product supports a wide range of USB-based peripherals. These peripherals are applicable in providing the means for software installation, application storage, data storage, and system software recovery and updates.

VESA Mounting Bracket Installation Guide

The product package includes a VESA-compliant mounting bracket (1) which mounts the product (2) onto a VESA-compatible monitor or display.

NOTE: The VESA Mounting Bracket is compatible with most displays and monitors that support the VESA standard.

Step1:

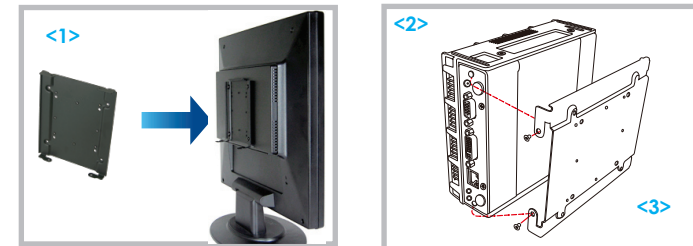
- Locate the existing mounting holes on the monitor.
- Line the bracket holes up with the holes on the back of the monitor, as shown to the right.
- Place the screws to hold the mounting bracket in place and tighten the screws (do not over-tighten).

Step2:

- Remove the two M3 screws (3) originally on the product.
- Place the product (2) on the bracket rail with the interface ports side facing downwards so that the two mounting holes on the appliance are aligned with the existing holes on the rail (see picture).

Step 3:

- Apply and tighten the screws into their original locations and make sure that the bracket and the product are properly secured.



For SA1350

Server Installation

Please refer to the WCM 6 Pro Installation Guide for software installation instructions.

Connect Player and Register to WCM Server

- When you power on your signage player, the registration dialog will be launched automatically. You can also launch it from Start | All Programs | DT Research | WebDT Signage Player | Register Player Again.

NOTE: If your signage player is located in a LAN with a WCM server, the player will automatically register to the server in the same LAN.

- To exit the full screen introduction, press "Ctrl+Shift+Space" to exit the WebDT Signage Player.
- To re-launch the WebDT Signage Player, navigate to Start | All Programs | DT Research | WebDT Signage Player | Start player.