

## Wireless Networking

### Wireless LAN

The Graphics Station System is often delivered with an embedded (user-inaccessible) 802.11ac WLAN adapter equipped with a hidden custom antenna.

- Through the support of typical WLAN adapters, the Graphics Station System should be able to detect all 802.11 access points in the vicinity for you to select the access point of your choice for connection.
- The SSID and WEP/WPA/WPA2 (if enabled) parameters on the Graphics Station System and the access points have to match. The SSID is case-sensitive and it is recommended that you enable WEP/WPA/WPA2 encryption (or advanced alternatives) for secure access.
- When WEP/WPA/WPA2 is enabled, you may need to consult your network administrator or your networking equipment literature to properly configure associated settings such as Authentication mode, etc.
- Refer to the access point operating manuals for setting up the 802.11 access points.

### Cleaning the Screen

- A screen cleaning solution that is alcohol-free and non-abrasive can be used to clean the touch screen.
- Cleaning with a micro-fiber cloth is recommended.
- Please spread the solution onto the cloth and then clean the touch screen.

### Cleaning the Anti-microbial Enclosure

- Use a soft/non-abrasive cloth moistened with water to clean the enclosure.
- If using a cleaner, an alcohol-free and oxide-free cleaning liquid is recommended.
- To prevent scratching the anti-microbial coating, please wipe gently.

**DT Research**

## Medical-Grade Graphics Station



## BASIC OPERATION GUIDE

# 554GR

### INTRODUCTION

Thank you for acquiring DT Research's Graphics Station System. With a 23.8" TFT-LCD display and powered by an Intel® Core™ i processor, the All-In-One Computer 554GR offers an optimal functionality combining excellent performance and power-saving capability. The 554GR equipped with powerful Graphics and processing capabilities, and available with a choice of the Microsoft Windows 11 IoT Enterprise or Ubuntu operating systems. It is also fitted with dedicated NVidia Graphics cards (RTX A2000, RTX A4000), and up to 64GB of RAM, which make them ideal for handling complex medical imaging applications.

Please take a few moments to review the contents of this document to ensure that the setup and startup proceed smoothly. The Graphics Station System is ready for use, out of the box, in its default configuration when powered by the power source provided. The following documentation offers guidance on the hardware elements and features of the computer. Please refer to your device provider for information pertaining to the software operating system or software applications.

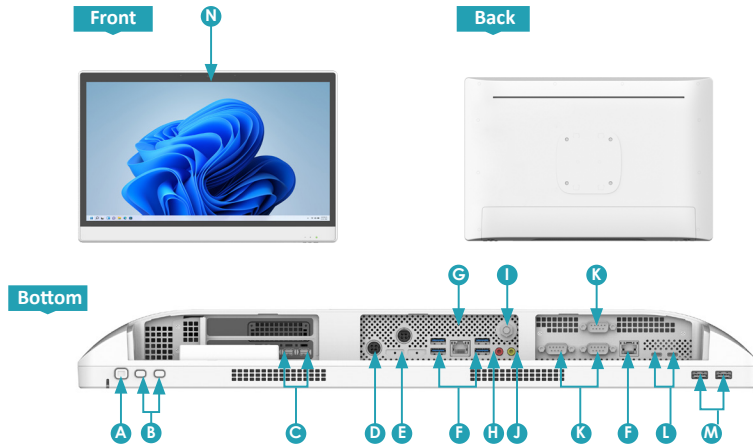
### PACKAGE CONTENTS

- 554GR
- AC-DC power adapter with power cord x 1 (Default),  
AC-DC power adapter with power cord x 2 (For RTX A4000 SKU)
- Basic operation guide

## I/O Ports

The Graphics Station System has a comprehensive set of I/O ports located at the bottom side of the unit.

### 554GR



<b>A</b> Power button	<b>H</b> Microphone
<b>B</b> Brightness +/-	<b>I</b> Potential Equalization
<b>C</b> Display Port	<b>J</b> Headphone
<b>D</b> DC-In	<b>K</b> COM
<b>E</b> DC-In (Optional, only for RTX A4000 SKU)	<b>L</b> USB Type-C
<b>F</b> USB 3.0	<b>M</b> USB 2.0
<b>G</b> Ethernet	<b>N</b> Front Camera

## PRECAUTIONS

- Always exercise care when operating and handling the Graphics Station System.
- Never disassemble any portion of the enclosure, as this will void any product warranty on the Graphics Station System.
- Do not use any AC/DC adapter other than the one provided with the device or a replacement acquired from the manufacturer.
- In the unlikely event that smoke, abnormal noise or strange odor is present, immediately power down the Graphics Station System and disconnect all power sources. Please report the problem to your device provider immediately.

## BASIC FEATURES

The Graphics Station System integrates a high-brightness 23.8" display with a high-performance system and USB ports to satisfy the varying needs for comprehensive point-of-care applications.

### Attach The Tabletop Stand (Optional)

1. Insert the top two tabs of the tabletop stand into the top two open slots on the 554GR back panel.
2. Push the latch to pivot the two lower tabs of the tabletop stand.
3. Push the two lower tabs into the two lower slots on the 554GR back panel. Make sure the latch locks back into position so the stand is securely attached.



### Detach the Tabletop Stand (Optional)

1. Push the latch to pivot the two lower tabs.
2. Pull out the two lower tabs, then the two upper tabs from the 554GR back panel.



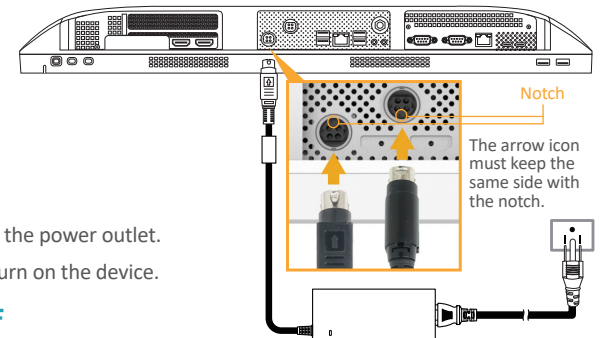
### Connecting the DC Power:

1. Connect the power cable to the AC/DC adapter. Then plug the AC/DC adapter to the DC IN jack of 554GR. (If your 554GR features with RTX A4000 graphics card, please plug another AC/DC adapter to the second DC IN jack on the device.)



#### CAUTION

Please ensure that the arrow icon on the adapter connector keep the same side with the notch on the DC IN jack before plugging the adapter to the DC IN jack to avoid short circuits.



2. Connect the power cable to the power outlet.
3. Press the Power button to turn on the device.

### Powering ON and OFF

To activate the Graphics Station System, push and quickly release the Power Button and the display will come on in a few seconds. To put in Standby mode, push and quickly release the Power Button. To turn off for extended storage, power off the device safely using any software function that "shuts down computer" provided in the software operating system.

#### NOTE:

To conserve power, use (push and quick release) the Power Button to put the device in "Standby" mode while not in use. Pushing briefly on the same button will wake up the system within seconds.

#### NOTE:

Avoid using the Power Button ("hold 4+ seconds" feature) to turn off the device — this form of hardware shutdown is intended to be a means of recovery from device lockups, and not as normal operation.