




【WebDT400 Series Software Utility Manual】

Last Updated: May 26, 2011

For Windows Mobile 6

Using the System Utility

The **System Utility** program can be launched by pressing the front button  to allow user enable/disable WiFi, Bluetooth, RFID, MSR and Scanner, adjust the LCD brightness level and speaker volume. User can also assign the **System Utility** to other programmable front buttons by **Button Settings**.

Note: Run **Start > Settings > Buttons** to launch **Button Settings**.





【WebDT400 Series Software Utility Manual】

Last Updated: May 26, 2011

The 3 major functions in the **System Utility** as below:

1. Communication Status

Allow user to enable or disable a WiFi/Bluetooth/RFID/MSR/Scanner or adjust the WiFi/Bluetooth properties quickly.

If the WiFi /Bluetooth/RFID/MSR/Scanner modules are installed, user will be able to turn on or turn off the connection via the blue circle buttons. Click the Properties buttons of WiFi / Bluetooth will launch the Property dialogs for WiFi or Bluetooth.

Note: MSR/RFID/Scanner properties are currently not available to connect from the System Utilities.

2. Brightness

User can increase or decrease the brightness of the LCD panel by clicking on the up and down arrow buttons.

3. Speaker

User can increase or decrease the speaker volume by clicking on the up and down arrow icons. User can also mute the speaker by clicking on the speaker icon. Click the icon again will unmute the speaker.






【WebDT400 Series Software Utility Manual】

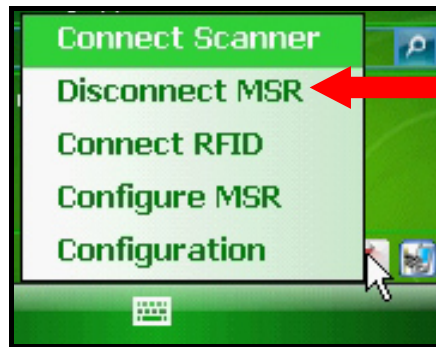
Last Updated: May 26, 2011

Operating the Data Capture Modules via Keyboard Wedge

The WebDT Keyboard Wedge is the software program that interfaces with the device to translate data read by the data capture module – such as a magnetic strip card reader, a barcode scanner or a RFID reader—into keystroke data.

Connect Modules by Keyboard Wedge

Tap on the  icon in the task bar, a menu displays as shown in the picture as below. You can choose to connect a Scanner, MSR or RFID. The input data from the selected data capture module will be passed to the active application as keystrokes. (e.g. MSR module has been connected in below picture)



MSR module connected




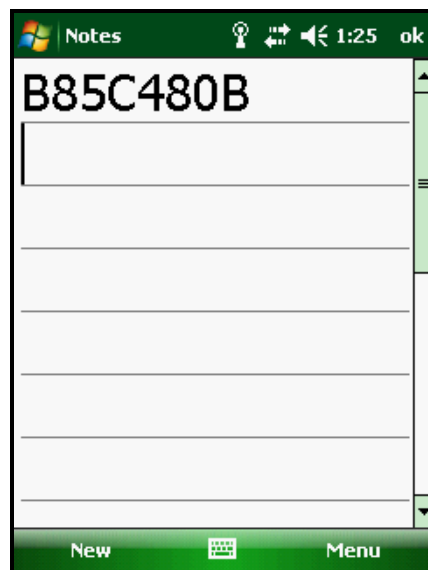
【WebDT400 Series Software Utility Manual】

Last Updated: May 26, 2011

Test Modules by Keyboard Wedge

To test the modules with Keyboard Wedge, please ensure the module is not connected with the WebDT Terminal and all the configuration settings are completed.

1. Tap the  icon in the task bar, and connect the required module.
2. Run **Start> Programs>Notes** to launch the **Notes** program and **New** a file.
3. Swipe a Magnetic Stripe Card, scan a bar code or place a ISO card within 3 cm of the RFID tag, the captured data will display in the Notes document.
4. Verify the captured data.





【WebDT400 Series Software Utility Manual】

Last Updated: May 26, 2011

Configure MSR

For a Magnetic Stripe Card, the raw data in each data track may contain start and end sentinel characters, you can select the **Configure MSR** from the Keyboard Wedge menu option to parse input raw data and filter out the start and end sentinel characters or each track.

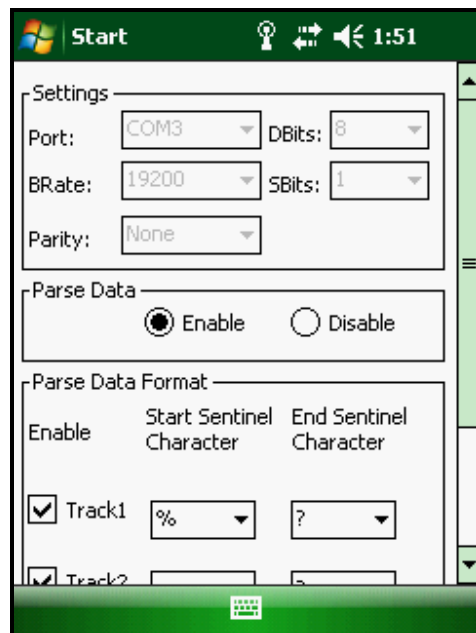
1. Click **Configure MSR** in the menu, to launch the configuration program of MSR.
2. Select **Enable** in the "Parse Data" section.
3. Choose the data you want to parse at the start or end of each track.

For Example:

Check Track 1

In Start Sentinel Character, select "%"

In End Sentinel Character, select "?"

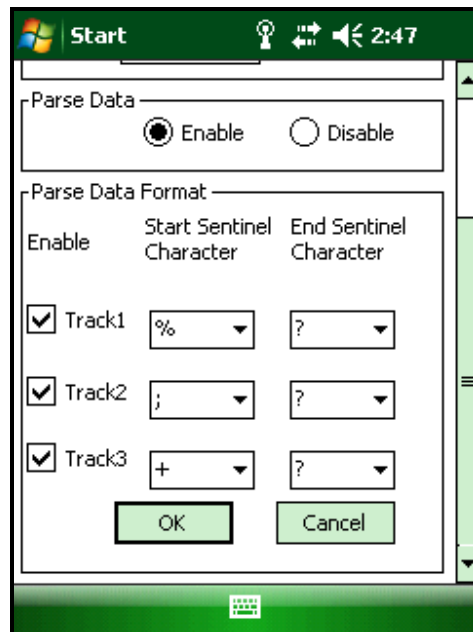




【WebDT400 Series Software Utility Manual】

Last Updated: May 26, 2011

4. Click **OK** to complete the settings, or click **Cancel** to exit.





【WebDT400 Series Software Utility Manual】

Last Updated: May 26, 2011

Other Configuration Settings

1. Select **Configuration** from Keyboard Wedge menu option to launch the **Configuration** page.
2. Check the “**Add ENTER key after data**” to automatically add ENTER command after data captured.
3. Input Start or End sentinel characters for Scanner, RFID or MSR to help distinguish where the captured data come from.
4. Select **OK** to complete the settings, or **Cancel** to exit.

Note: If your handheld device doesn't come with a scanner/RFID/MSR module, the related Start/ End char field can't be filled.

