




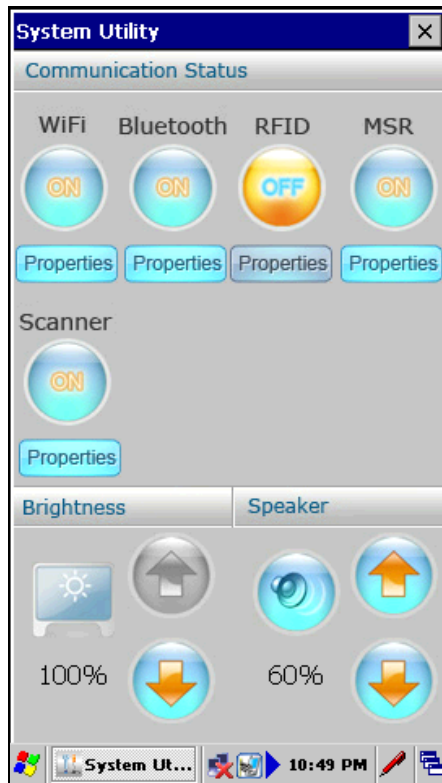
【WebDT400 Series Software Utility Manual】

Last Updated: June 23, 2011

For Windows CE 6.0

Using the System Utility

The **System Utility** program can be launched by pressing the front button  to allow user enable/disable WiFi, Bluetooth, RFID, MSR and Scanner , adjust the LCD brightness level and speaker volume. User can also assign the **System Utility** to other programmable front buttons via **Button Manager** (Please refer to page 3)





【WebDT400 Series Software Utility Manual】

Last Updated: June 23, 2011

The 3 major functions in the **System Utility** as below:

1. **Communication Status**

Allow user to enable or disable a WiFi/ Bluetooth/RFID/MSR/Scanner or launch the WiFi/Bluetooth/RFID/MSR/Scanner window to adjust the properties quickly. If the WiFi/Bluetooth/RFID/MSR/Scanner modules are installed, user will be able to turn on or turn off Wireless connection via the blue circle button. Click the **Properties** buttons of WiFi/Bluetooth to launch the Property dialogs for WiFi/Bluetooth.

Note: MSR/RFID/Scanner properties are currently not available to connect from the System Utilities.

2. **Brightness**

User can increase or decrease the brightness of the LCD panel by clicking on the up and down arrow buttons.

3. **Speaker**



User can increase or decrease the speaker volume by clicking on the up and down arrow icons. User can also mute the speaker by clicking on the speaker icon. Click the icon again will unmute the speaker.



【WebDT400 Series Software Utility Manual】

Last Updated: June 23, 2011

Using the Button Manager

The Button Manager is an application used to define button functions of the front buttons. All the front buttons are user programmable, except for the **Suspend/Resume**  button. If you would like use the Combination Button Function (Fn+ any front button), the “Fn” button has to be assigned to the 3rd front button .

(Please refer to page 8 for **Combination Button Function**)

Run **Start >Programs > Button Manager** or click the  icon in the taskbar to launch the **Button Manager** program.

You can always click the “**Default**” button to restore to default button assignment, or click “**Cancel**” button exit the program.




Note: If a scanner is installed, the two side trigger buttons are assigned as scanner trigger button by default and won't be programmable. If your WebDT 400 doesn't come with a scanner, then these two buttons will have no default functions and can be assigned to trigger other functions.

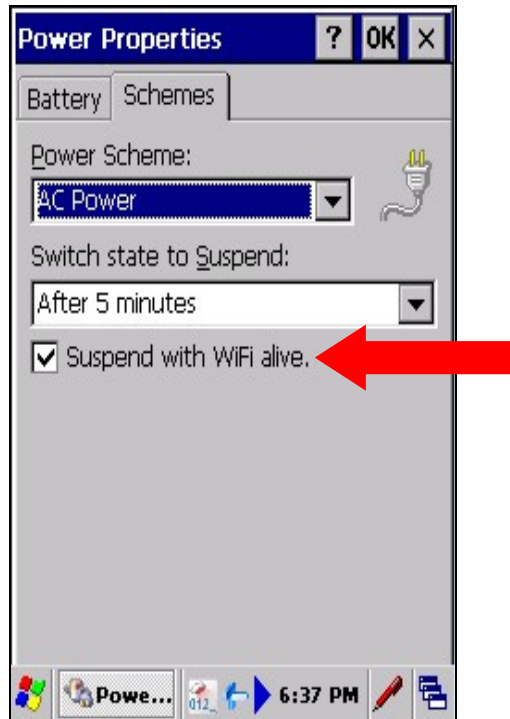



【WebDT400 Series Software Utility Manual】

Last Updated: June 23, 2011

Non-programmable Buttons:

-  : This button is defined as the **Suspend/Resume function**. When the device is in operation, press once will suspend the device. Depends on the “Keep WiFi alive” option in the Control Panel Power control, user can choose to keep WiFi alive in the suspend mode, which will consume more power. Or user can uncheck this option to stop WiFi connection if the device enters Suspend mode. When the device is in the suspend mode, press the button once will resume the device to normal operation mode.




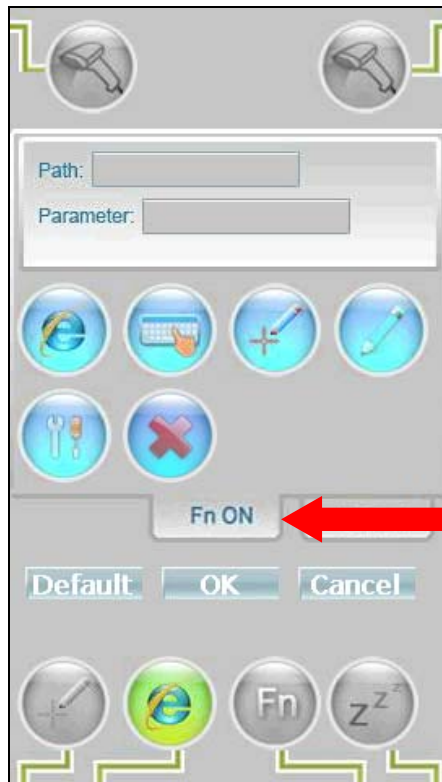
-  : This combination function button is defined as touch screen calibration. After pressing the buttons, the touch calibration will start immediately.



【WebDT400 Series Software Utility Manual】

Last Updated: June 23, 2011

- 3  (FnON mode) : The 3rd button is defined as a functional button for Combination Button Function and won't be programmable under Fn On tab. This button is still programmable if it is not used as the functional button. (in Normal tab)




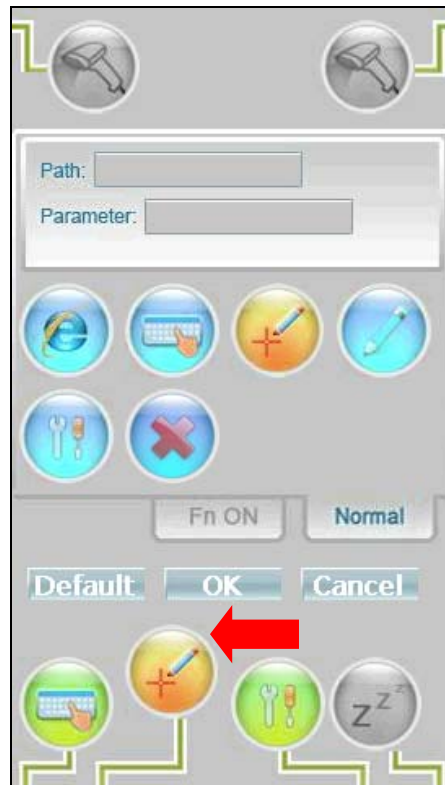


【WebDT400 Series Software Utility Manual】

Last Updated: June 23, 2011

To Assign a Normal Button Function:

1. Start **Button Manager** by tapping  in the task bar.
2. Tap one of the front buttons on WebDT 400 to be programmed. The tapped button will be changed to orange status as shown in bellow picture:



User can select one of the listed blue buttons in “**Normal**” tab to replace the tapped button. Then the button function will be changed immediately. Click “**OK**” to confirm the change and exit **Button Manager**



【WebDT400 Series Software Utility Manual】

Last Updated: June 23, 2011

3. In the **Normal** tab, there are a list of pre-defined buttons:

Internet Explorer/ On-Screen Keyboard/Touch Calibration/ Run a specific program/System Utility/No action



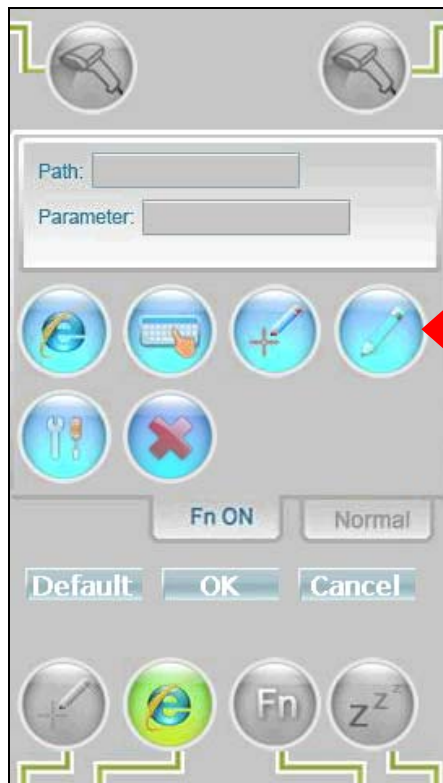


【WebDT400 Series Software Utility Manual】

Last Updated: June 23, 2011

To Run a Specific Program:

1. Tap one of the front buttons on WebDT 400 series to be programmed.
2. Tap the customized button shown in below picture, and enter the path name of the executable program and its parameters. Or click “**Browse**” button to select a target program location.
3. Click **OK** to assign the function to the selected button.
4. The function is now assigned to the customized program selected by user. Press the selected front button to launch the program.




Customized Button




【WebDT400 Series Software Utility Manual】



Last Updated: June 23, 2011

To Assign a Combination Function Button:

1. Switch to “Fn On” tab, the “Fn” function is assigned to 3rd front button  by default.

2. Select a function from the blue buttons listed in the **FnON** tab. And it will be assigned to 2nd front button  directly.

3. Click **OK** to enable this function on the selected button.

4. The combination function is now assigned. Click  and  to enable the function.






【WebDT400 Series Software Utility Manual】

Last Updated: June 23, 2011

Operating the Data Capture Modules via Keyboard Wedge

The WebDT Keyboard Wedge is the software program that interfaces with the device to translate data read by the data capture module – such as a magnetic strip card reader, a barcode scanner or a RFID reader—into keystroke data.


Connect Modules by Keyboard Wedge

Tap on the  icon in the task bar, a menu displays as shown in the picture as below. You can choose to connect a Scanner, MSR or RFID. The input data from the selected data capture module will be passed to the active application as keystrokes. (e.g. MSR module has been connected in below picture)



Test Modules by Keyboard Wedge

To test the modules with Keyboard Wedge, be sure that it's not connected with the WebDT Terminal and all the configuration settings are completed.

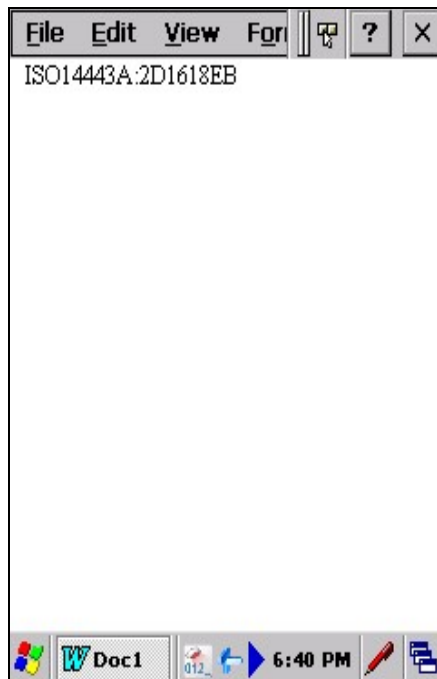
1. Tap the  icon in the task bar, and make sure that the module has been connected.
2. Run **Start> Programs>Microsoft WordPad**.
3. Swipe a Magnetic Stripe Card, scan a bar code or a RFID card, the captured data will appear in the WordPad document.



【WebDT400 Series Software Utility Manual】

Last Updated: June 23, 2011

4. Verify the captured data.



Configuration MSR

For a Magnetic Stripe Card, the raw data in each data track may contain start and end sentinel characters, you can select the **Configuration MSR** to parse input raw data and filter out the start and end sentinel characters or each track.

1. Click **Configuration MSR** in the menu, to launch **MSR Application Config**.
2. Select **Enable** in the "Parse Data" section.
3. Choose the data you want to parse at the start or end of each track.

For Example:
Check Track 1

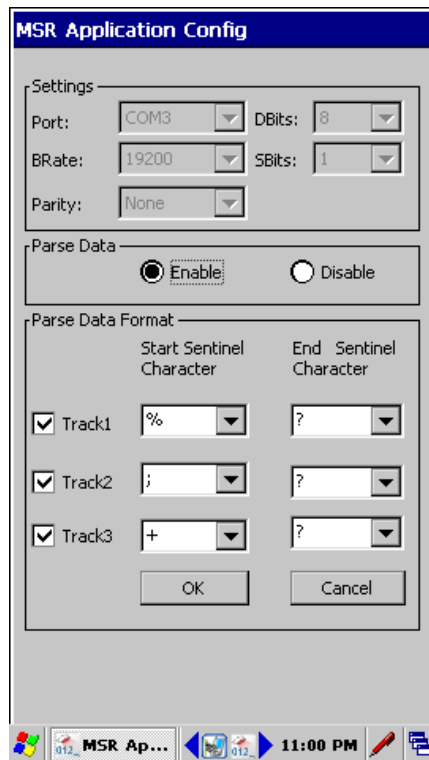


【WebDT400 Series Software Utility Manual】

Last Updated: June 23, 2011

In Start Sentinel Character, select "%"
In End Sentinel Character, select "?"

4. Click **OK** to complete the settings.





【WebDT400 Series Software Utility Manual】

Last Updated: June 23, 2011

Configuration

1. Select the **Configuration** in the menu, to launch **Configuration**
2. Check the “Add ENTER key after data” to automatically add ENTER command after data captured.
3. Input Start or End sentinel characters for Scanner, RFID or MSR to help distinguish where the captured data come from.
4. Select **OK** to complete the setting.

The screenshot shows a 'Configuration' dialog box with a blue header. It contains a checked checkbox labeled 'Add ENTER key after data'. Below this are two columns of input fields labeled 'Start char' and 'End char'. The rows are labeled 'Scanner', 'RFID', and 'MSR'. At the bottom are 'OK' and 'Cancel' buttons.

	Start char	End char
Scanner	<input type="text"/>	<input type="text"/>
RFID	<input type="text"/>	<input type="text"/>
MSR	<input type="text"/>	<input type="text"/>

Buttons: