

## Options

The DT517MD/ DT522MD has a number of optional configurations in both software and hardware. These include:

1. SSD or HDD storage
2. IR touch screen display
3. Magnetic card reader (DT517MD)
4. Presence sensor and scanner auto detection (DT517MD)
5. Built-in 802.11a/b/g/n WLAN module
6. Smart card reader; supports ISO 7816 T=0, T=1 smart card, 3V/ 5V smart card and memory card



## SPECIFICATIONS

System	DT517MD	DT522MD
<b>Processor</b>	Intel® Atom™ N270, 1.6GHz	
<b>Memory (RAM)</b>	2GB	
<b>Storage</b>	2GB to 16GB Flash, 32GB to 64GB SSD, or HDD	
<b>Operating Systems</b>	Microsoft® Windows® Embedded Standard 7, Windows® 7 Professional or XP Embedded or XP Professional	
<b>Display</b>	17" TFT-LCD	21.5" TFT-LCD
<b>Display Resolution</b>	1280 x 1024	1920 x 1080
<b>Touch Screen</b>	IR touch (optional)	
<b>Network Interface</b>	Ethernet 10/ 100/ 1000 MB Base-T LAN; 802.11a/b/g/n WLAN (optional)	
<b>Control Buttons</b>	5 side buttons: power and programmable buttons	
<b>Stereo Speaker</b>	Built-in speaker	
<b>Input/Output Ports</b>	4 USB 2.0 ports; 2 COM ports; 1 Audio-out jack; 1 Microphone-in jack; 1 RJ45 connector for Ethernet	
Power	DT517MD	DT522MD
<b>AC/DC Adapter</b>	<b>Input:</b> 100 – 240V AC; <b>Output:</b> 18.5V DC, 3.89A	
Mechanical	DT517MD	DT522MD
<b>Enclosure</b>	ABS + PC plastics, anti-microbial plastics	
<b>Base or Pedestal</b>	Detachable aluminum construction; VESA-compliant mounting	
<b>Dimensions (H x W x D) (With base stand)</b>	16.1 x 15.3 x 6.7 in/ 409 x 388 x 171 mm	15.8 x 20.8 x 6.7 in/ 402 x 528 x 171 mm
<b>Dimensions (H x W x D) (Without base stand)</b>	12.6 x 15.3 x 2.7 in/ 320 x 388 x 68 mm	12.6 x 20.8 x 2.8 in/ 3 19 x 528 x 70 mm
<b>Weight (With base stand)</b>	15.4 lbs/ 7 kg	20.7 lbs/ 9.4 kg
<b>Weight (Without base stand)</b>	12.8 lbs/ 5.8 kg	18.1 lbs/ 8.2 kg
Environmental	DT517MD	DT522MD
<b>Regulatory</b>	UL60601-1, FCC Class B, CE, RoHS compliant	
<b>Temperature</b>	<b>Operation:</b> 0°C - 40°C; <b>Storage:</b> -20°C - 60°C	
<b>Humidity</b>	0% – 90% non-condensing	

\* Specifications subject to change without notice.

## DT517MD/ DT522MD

### BASIC OPERATION GUIDE



### ENGLISH

#### INTRODUCTION

Thank you for acquiring the DT Research DT517MD/ DT522MD, a 17-inch/ 21.5-inch TFT display-integrated, medical computing system, offering flexible mounting configurations and applications.

The high performance system is suitable for image-intense medical applications such as digital radiology, anesthesia, and endoscopy in operating areas, at bedside, in nursing stations, or anywhere within the healthcare facility.

Please take a few moments to review the contents of this document to ensure that the setup and startup proceed smoothly. The DT517MD/ DT522MD is ready for use, out of the box, in its default configuration when powered by the power source provided. The following discussion offers guidance on the hardware elements and features of the DT517MD/ DT522MD. Please refer to your device provider for information pertaining to the software operating system or software applications.

#### Package Contents

- One DT517MD or 522MD
- AC/DC power adapter with power cord
- Basic operation guide

#### Precautions

- Always exercise care when operating and handling the DT517MD/ DT522MD.
- Never disassemble any portion of the enclosure, as this will void any product warranty on the DT517MD/ DT522MD.
- Do not use any AC/DC adapter other than the one provided with the device or a replacement acquired from the manufacturer.
- In the unlikely event that smoke, abnormal noise, or strange odor is present, immediately power down the DT517MD/ DT522MD and disconnect all power sources. Please report the problem to your device provider immediately.

### Packaging

- The DT517MD/ DT522MD is packaged with recyclable materials and designed for maximum protection in transportation and handling.
- When possible, please save the packaging carton and protective inserts for re-use if there is ever a need to ship the DT517MD/ DT522MD.



### Cleaning the anti-microbial enclosure

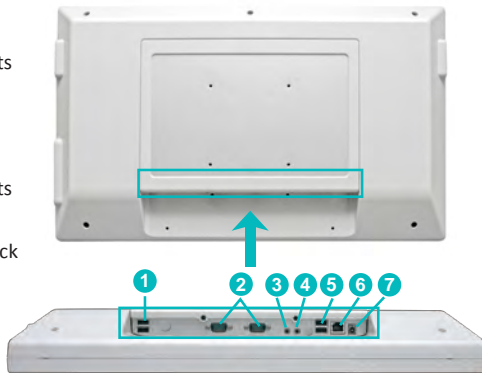
- Use a soft/non-abrasive cloth moistened with water to clean the enclosure.
- If using a cleaner, an alcohol-free and oxide-free cleaning liquid is recommended.
- To prevent scratching the anti-microbial coating, please wipe gently

### I/O Panels

#### Lower I/O Panel

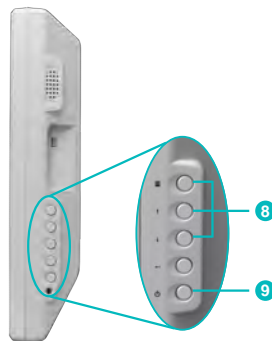
The DT517MD/ DT522MD has a comprehensive set of I/O ports. The following ports are located along the lower rear edge of the display unit.

1. Two (2) USB 2.0 ports
2. COM ports
3. Microphone-in jack
4. Audio-out jack
5. Two (2) USB 2.0 ports
6. Ethernet port (RJ45)
7. 18.5V/ 3.5A DC-in jack



#### Side Panel Function Buttons

The side panel of the DT517MD/ DT522MD features power, and programmable buttons.



Button	Description
<b>8. Programmable</b>	The three buttons are intended to be user programmable via software in applicable operating systems. <ul style="list-style-type: none"> <li>• May be configured to perform different functions, depending on the software operating system.</li> </ul>
<b>9. Power</b>	<ul style="list-style-type: none"> <li>• Depending on the OS, a brief, firm push will trigger software-enabled entry into Shutdown or Standby modes. Push in similar manner to Restart or to exit Standby mode.</li> <li>• Push and hold for over 4 seconds to forcefully shut down the device. This method of powering off should only be used when proper shutdown through software is not possible.</li> </ul>

### Mounting

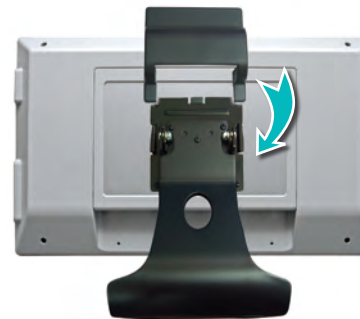
The DT517MD/ DT522MD is designed to be secured to VESA-compliant mounting arms or stands. This is accomplished by equipping the standard metal base on the rear of the display unit. The VESA-compliant mounting holes at the rear of the device will mate with VESA mounts or arms to meet the requirements of the deployment.



1. The display without the base.



2. Attach the stand to the display. Screw the VESA-compliant bracket of the stand to the display with four (4) screws.



3. Cap the cover to the top of the stand.