

Installation





The Barcode Scanner is preinstalled as an option for the WebDT 390.



Button Management

The default scanner trigger button is on the right side.

To assign Scanner Trigger button, follow the procedures below.

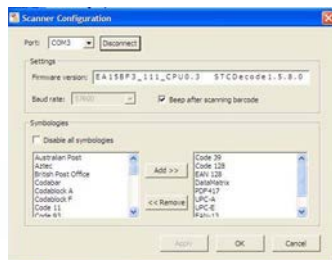
1. Start **Button Manager** by clicking on  in the system tray.
2. Select an available unused button marked with the icon .
3. Click on  to go to the second screen of **Button Manager**.
4. Click on the  icon to assign the **Scanner Trigger** to the unused button.
5. Click **OK** to apply configuration settings and close the window.



Scanner Configuration


To **Add/Remove** Symbologies, follow the procedures below.

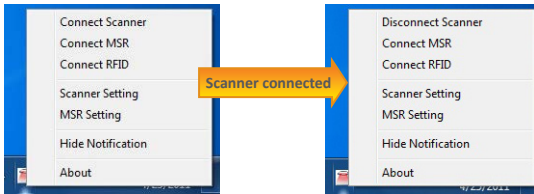
1. Click **Start | All Programs | DT Research | Button Manager | ScannerConfig**.
2. Select **COM3** and click **Connect** button.
3. **Add** Symbology with **Add >>** button and **Remove** Symbology with **<< Remove** button.
4. Select the **Beep after scanning barcode** checkbox to enable beep sound after scanning bar code or deselect it to disable the beep sound.
5. Click **OK** to apply the configuration settings and close the window.



Note: Add only the needed symbologies for best performance.

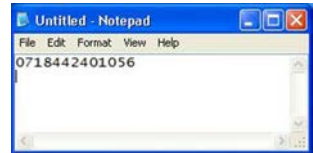
To Connect Barcode Scanner Module

To connect the Barcode Scanner, you can use the WebDT Keyboard Wedge to connect. Tap on the  icon in the task bar, a menu displays as shown in the picture below. Select Connect Scanner.



To Test Barcode Scanner Module

1. Click **Start | All Programs | Accessories | NotePad** to run the Notepad.
2. Scan one of the several supported barcode Symbologies. The output will appear in the Notepad screen.
3. Verify the captured data.



The Default Port Parameters for Barcode Scanner Module

Port	COM3
Baud Rate	57600
Data Bits	8
Parity	None
Stop Bits	1
Flow Control	None

Note: Please refer to Hyper Terminal Settings to confirm or change the port parameters.

SPECIFICATIONS

Scanning Performance	Scan rate	2D mode: 56 images/s auto adaptive Linear (1D)emulation mode: 200 scans/s auto adaptive
	Scan angle	38.9° (Horizontal), 25.4°(Vertical)
	Optical resolution	752 (H) x 480 (V) pixels, 256 gray levels
	Print contrast	down to 25%
	Versions	Standard range and high density

Note: Specifications are subject to change without notice.



Linear Imager Compliance and Precaution

This product complies with the following standards for laser and LED safety.
IEC 60825-1 / EN 60825-1 - Class 1 LED Product



DT Research, Inc.

2000 Concourse Drive, San Jose, CA 95131 <http://www.dtresearch.com>

Copyright © 2011, DT Research, Inc. All Rights Reserved.





DT Research and WebDT are registered trademarks of DT Research, Inc.

Installation

The CMOS Camera is preinstalled as an option for the WebDT 390.

Button Management

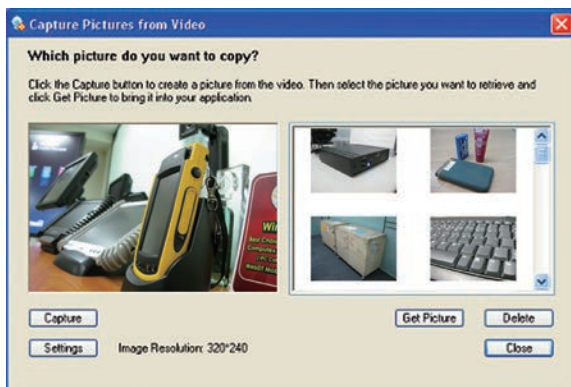
To assign Camera Trigger button, follow the procedures below.

1. Start **Button Manager** by clicking on  in the system tray.
2. Select an available unused button marked with the icon .
3. Click on  to go to the second screen of **Button Manager**.
4. Click on the  icon to assign the **Camera Trigger** to the unused button.
5. Click **OK** to apply configuration settings and close the window.



To Test CMOS Camera Module

To test the CMOS Camera, launch **Microsoft® Paint** from **Start | All Programs | Accessories**. Select **File | From Scanner or Camera** to initiate the **Capture Pictures from Video** window.



- ▶ Click **Setting** to choose the properties of captured pictures.
- ▶ Click on **Capture** button or pre-assigned trigger button to take a picture.
- ▶ Select a captured picture from right column, click **Get Picture** to export the picture to **Paint** or click **Delete** to delete the picture.

Note: The user interface may be slightly different according to different operating systems.

SPECIFICATIONS

Sensor	CMOS sensor
Resolution	640 x 480 (default), 1280 x 1024, 1600 x 1200, 2048 x 1536
Auto Focus	Yes
Automatic Image Control	Automatic exposure control Automatic white balance control
Focusing Type	Auto focus
Focus Distance	Focal on 60cm

Note: Specifications are subject to change without notice.



DT Research, Inc.

2000 Concourse Drive, San Jose, CA 95131 <http://www.dtresearch.com>

Copyright © 2011, DT Research, Inc. All Rights Reserved.

DT Research and WebDT are registered trademarks of DT Research, Inc.



Mobile POS Tablet Magnetic Stripe Reader

Installation

The Magnetic Stripe Reader (MSR) is preinstalled as an option for the WebDT 390.



To Connect Magnetic Stripe Reader Module

To connect the Magnetic Stripe Reader, you can use the **WebDT Keyboard Wedge**. Tap on the icon in the task bar, a menu is displayed as shown in the picture below. Choose **Connect MSR**.



To Configure MSR

For a magnetic stripe card, the raw data in each data track may contain start and end sentinel characters. To remove those characters, you can select the **Configure MSR** command to parse input raw data and filter out the start and end sentinel characters on each track.

1. Click **Config MSR** in the **WebDT Keyboard Wedge** menu, and the **MSR Parse Format Setting** window will be displayed.
2. Choose **Enable** in the Parse Data section.

Choose data you want to parse at the start or end of each track.

For Example:

Check Track 1

- In Start Sentinel Character, select %
- In End Sentinel Character, select ?

3. Click **OK** to complete the settings



To Test Magnetic Stripe Reader Module

1. Click **Start | All Programs | Accessories | NotePad** to run the Notepad.
2. Swipe a magnetic stripe card across the module.
The output will appear in the **NotePad** screen.
3. Verify the captured data.



Default Port Parameters for Magnetic Stripe Reader Module

Port	COM2
Baud Rate	19200
Data Bits	8
Parity	None
Stop Bits	1
Flow Control	None

Note: Please refer to Hyper Terminal Settings to confirm or change the port parameters.

SPECIFICATIONS

Reference Standards	- ANSI/ISO Standards 7810, 7811-1/6, 7812 & 7813 - JIS X6301, X6302 - AAMVA
Recording Method	Two frequency coherent phase (F2F)
Decoding Method	ISO Track1: IATA, Track2: ABA, Track3: THRIFT
Card Swiping Direction	Bi-directional
Card Swiping Speed	Card speed through the unit may vary from 3ips to 100ips (7cm/s to 250cm/s)
Life	Electronics 125,000 hours Head 1,000,000 passes

Note: Specifications are subject to change without notice.



DT Research, Inc.

2000 Concourse Drive, San Jose, CA 95131 <http://www.dtresearch.com>

Copyright © 2011, DT Research, Inc. All Rights Reserved.

DT Research and WebDT are registered trademarks of DT Research, Inc.



Mobile POS Tablet RFID Reader

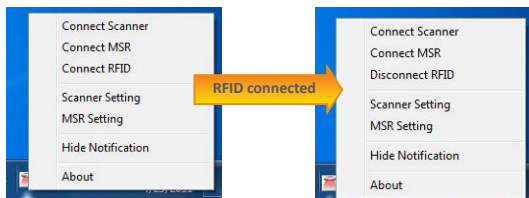


Installation

The RFID reader is preinstalled as an option for the WebDT 390.

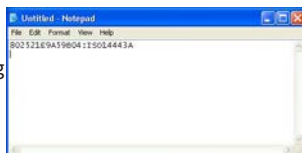
To Connect RFID Reader Module

To connect the RFID, you can use the **WebDT Keyboard Wedge** to connect. Tap on the icon in the task bar, a menu displays as shown in the picture below. Select **Connect RFID**.



To Test RFID Reader Module

1. Click **Start | All Programs | Accessories | NotePad** to run the Notepad.
2. Place an ISO card within range of the RFID tag (see reading range in specifications).
3. Verify the captured data.



SPECIFICATIONS

Frequency	13.56MHz \pm 7 KHz
Module Mode	FSK
Reading Range	Within 30mm
HF RFID Reader	ISO 15693,1443A(B), Felica UID



DT Research, Inc.

2000 Concourse Drive, San Jose, CA 95131 <http://www.dtresearch.com>

Copyright © 2011, DT Research, Inc. All Rights Reserved.

DT Research and WebDT are registered trademarks of DT Research, Inc.

HyperTerminal

The HyperTerminal can be used to connect the Barcode Scanner and MSR.

1. Run **Start | All Programs | Accessories | Communications | HyperTerminal** to run the HyperTerminal.

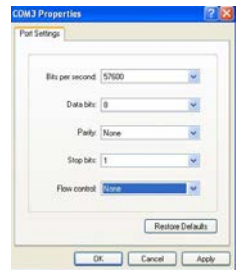
2. Input a connection name in “Connection Description” window.



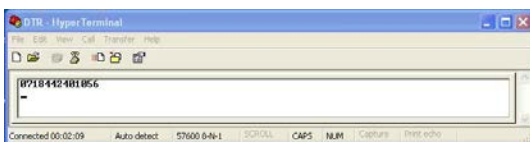
3. Choose the connection port (please refer to the parameters table of each module), then click **OK**.



4. Change the port Properties (please refer to the parameters table of each module), then click **Apply** to complete the settings.



5. If the settings are all correct, **HyperTerminal** will be connected to the module. Scan a barcode or swipe a card, the captured data will display in the HyperTerminal window.



6. Verify the captured data.