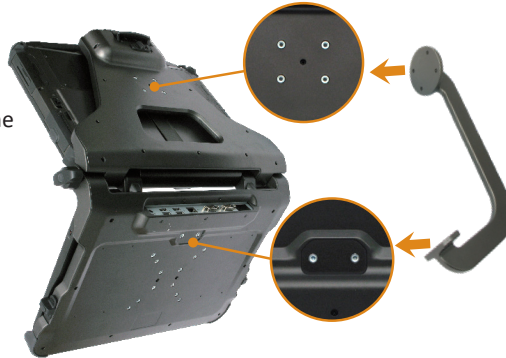


## To Secure the Vehicle Mount Cradle System

When the Vehicle Mount Cradle is installed in a vehicle, it is recommended to use the Vehicle Mount Fixed Bracket to keep the Cradle open and prevent vibrations from making it fold to closed position.

1. Attach the Vehicle Mount Fixed Bracket, and use two M4\*8mm screws to attach the Bracket to the bottom of the Cradle.
2. Attach four M4\*8mm screws to fix the Bracket to the back of the Cradle.



## Releasing the Tablet and Keyboard from the Cradle

1. Unlock, then remove the Top Clasp from the Tablet and then fold the tablet towards the keyboard.
2. Push the side latches to unlock the Keyboard.
3. Remove the Tablet and the Keyboard together from the Cradle.

## Specifications

	For DT313Y/DT313YR	For FT340T
<b>Dimensions (H x W x D)</b>	12.9 x 16.5 x 11.79 in/ 328.6 x 419 x 299.5 mm with the Vehicle Mount Fixed Bracket installed	14.4 x 15.98 x 16.97 in/ 366 x 406 x 431 mm with the Vehicle Mount Fixed Bracket installed
<b>Weight</b>	6.9lbs/ 3.12 kg	7.07 lbs/ 3.2 kg
<b>I/O Ports</b>		
<b>Ethernet</b>	2 x Ethernet 10/ 100/ 1000MB Base-T LAN	1 x Ethernet 10/ 100/ 1000MB Base-T LAN
<b>COM</b>	1	2
<b>USB 2.0</b>	4	4
<b>DC-in</b>	1	1
<b>GNSS Antenna Connector* (optional)</b>	1	1
<b>Mobile Broadband Antenna Connector* (optional)</b>	1	1

\* NOTE: The antenna connector only works while there are corresponding modules (optional) in the Rugged Tablet.

# Vehicle Mount Cradle

## BASIC OPERATION GUIDE



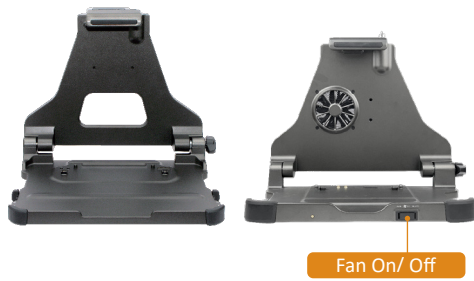
## INTRODUCTION

Thank you for acquiring the Vehicle Mount Cradle, part of the comprehensive line of DT Research Rugged Tablet accessories. Featuring robust design and full legacy I/O ports, this Cradle provides secure placement of the Rugged Tablet with the Docking Keyboard, and supports connection to peripherals as well as external mobile broadband/GNSS antennas when mounted in vehicles. The innovative design promotes ergonomic and efficient access and management of the DT Research Rugged Tablet.

## Package Contents

- One (1) Vehicle Mount Cradle
- One (1) Vehicle Mount Fixed Bracket
- Two (2) Keys for the security lock
- Four (4) M4\*12mm Screws
- Six (6) M4\*8mm Screws

## Front-View Layout



NOTE: The antenna connector only works while there are corresponding modules (optional) in the Rugged Tablet.

## Back View



- A** DC-in **B** USB 2.0 Ports **C** Ethernet **D** COM Ports
- E** GNSS Antenna Connector (optional)
- F** Mobile Broadband Antenna Connector (optional)

## Side-View Layout



## Top-View Layout

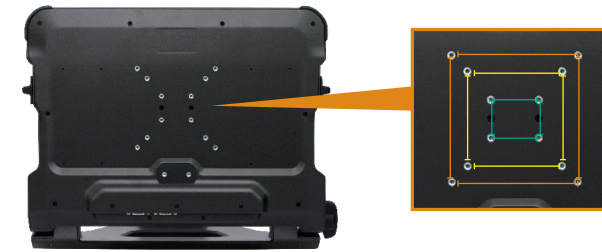


## Bottom-View Layout



## Mounting the Cradle

The Vehicle Mount Cradle supports VESA standard mounting options. Attach the four M4\*12mm to fix and mount the cradle from the bottom on a VESA arm.



## Placing the Tablet and Keyboard in the Cradle

1. Attach the Rugged Tablet on the Detachable Keyboard.

NOTE: The Tablet and Keyboard are not included in the Cradle package.



2. Place the Keyboard bottom-side into the Cradle properly. Slide the left and right latches to lock the keyboard into place.



3. Use the Key to unlock the Top Clasp.



4. Slide the Lock Latch on the back of the Cradle to loosen the Top Clasp.



5. Lift upward on the Tablet and move the Top Clasp forward to secure the top of the Tablet (under the Tablet handle).

NOTE: Before unfolding, screw the Knob counterclockwise to loosen the axle.



6. Connect to the power cable to make the I/O ports and connectors able to function.