

# DT Research Rugged Tablet



## BASIC OPERATION GUIDE

# DT323RP

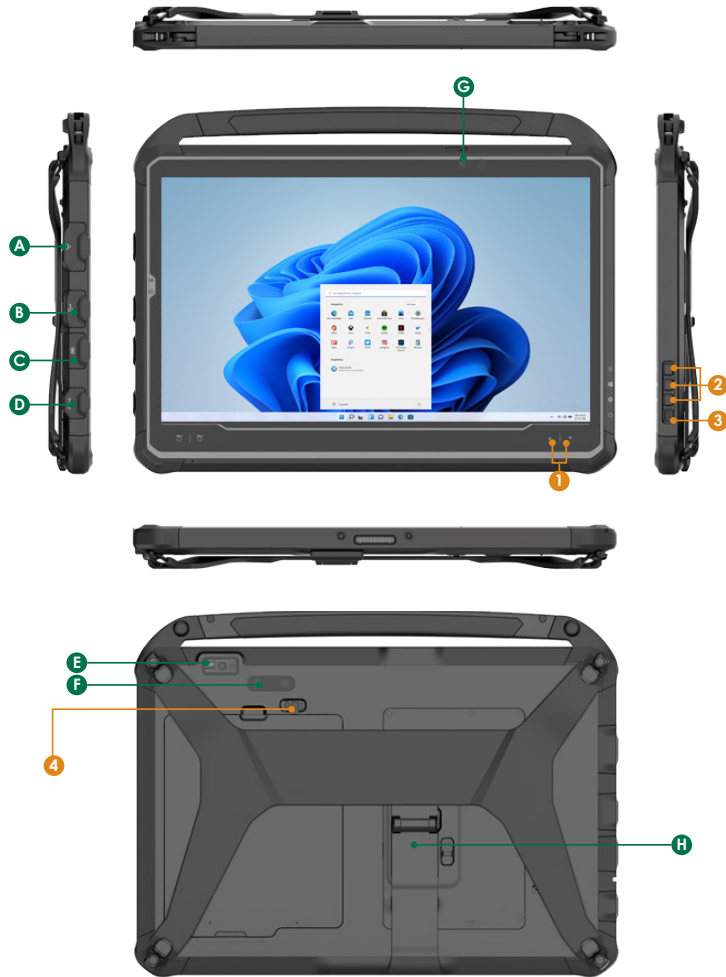
## INTRODUCTION

Thank you for acquiring the DT323RP, part of DT Research's line of Rugged Tablets. The DT323RP feature the integration of high-brightness 13.3" TFT display and high performance, energy-efficient Intel® Core™ i processor within slim, lightweight, durable packages. The DT323RP is available with Microsoft® Windows® operating system. The operating system features web browser, client/ server computing software, media player, accessories, and applications support.

## PACKAGE CONTENTS

- One DT323RP with Battery Pack and Handstrap
- AC-DC Power Adapter with Power Cord
- Basic Operation Guide

\* If your DT323RP contains Barcode Scanner or Front/Back Camera modules, please refer to the Tablet Modules Basic Operation Guide for detailed operation.



### Input/ Output Ports

<b>A</b>	LAN Port	<b>E</b>	Barcode Scanner (Optional)
<b>B</b>	USB 3.0 Port	<b>F</b>	Back Camera (Optional)
<b>C</b>	USB Type-C	<b>G</b>	Front Camera
<b>D</b>	DC-in Jack	<b>H</b>	Kickstand & SSD Access Door

### Button Functions

BUTTON	ACTION
<b>1</b>	Brightness Control Buttons
<b>2</b>	Programmable Buttons
<b>3</b>	Power Button
<b>4</b>	Battery Latch

### Power/Battery LED Status:

- Blue indicates the battery is 25% to 100% charged
- Blinking blue indicates the battery is charging
- Orange indicates that the battery is between 11% to 25%
- Blinking Orange indicates that the battery is below 10%

### PRECAUTIONS

- Always exercise care when operating and handling the DT323RP
- Do NOT apply excessive pressure to the display screen.
- We recommend using the Digital Pen (optional) to keep the screen clean.
- Avoid prolonged exposure of the display panel to any strong heat source. Wherever possible, the DT323RP should face away from direct light to reduce glare.
- If the AC-DC power adapter is used to recharge or power the tablet, do NOT use any AC-DC adapter other than the one provided or acquired from the manufacturer or its partners.
- In the unlikely event that smoke, abnormal noise, or strange odor is present, immediately power off the DT323RP and disconnect all power sources. Report the problem to your device provider immediately.
- Never attempt to disassemble the DT323RP, as this will void the warranty.

### BASIC FEATURES

The DT323RP wireless tablet integrates a bright and multi-touch display, USB ports, and embedded networking elements such as wireless LAN. The DT323RP is complemented by a suite of accessories, including battery expansion, charging cradles, and battery charger kit, for a comprehensive user experience.

A DT323RP typically integrates an 802.11ax wireless LAN (WLAN) adapter that may connect to other wireless devices or access points. If your DT323RP does not come with such a network adapter, please consult your device provider to establish the desired network connectivity.

## OPERATION

### Powering ON and OFF

To activate the DT323RP, push and quickly release the Power Button. The display will come on in a few seconds. To put the DT323RP in Standby mode, push and quickly release the Power Button. To turn the DT323RP off for extended storage, power off safely using any software function that “shuts down computer” provided in the software operating system.

#### NOTE:

The battery packs shipped with your tablet may be low in power—please use the AC-DC adapter with the DT323RP when setting up for the first time to fully charge the internal battery pack.

#### NOTE:

When the battery pack is charging, the blue-colored Battery LED should blink slowly. If plugging in the AC-DC adapter does not trigger this blinking activity and the LED stays dark, the battery pack may have been drained substantially. Try unplugging/ replugging the AC-DC adapter to the DT323RP a few times to activate the charging process.

#### NOTE:

To conserve power, use (push and quick release) the Power Button to put the tablet in “Standby” mode while not in use. Pushing briefly on the same button will wake up the system within seconds.

#### NOTE:

For DT323RP, avoid using the Power Button (“hold 4+ seconds” feature) to turn off the tablet—this form of hardware shutdown is intended to be a means of recovery from lockups, and not as normal operation.

### Start Up

If the power up (from Standby mode or otherwise) is successful, the appropriate interface will be displayed after a launch sequence of several seconds. The wireless LAN connection may take 10-15 seconds to be established.

### Configuring the Mobile Tablet

The DT323RP may be configured using the utilities and methods dictated by the software operating system. The DT323RP should be configurable for various properties such as user profiles, network features, and several system elements.

### Wireless Networking

#### Wireless LAN

The DT323RP is often delivered with an embedded (user-inaccessible) 802.11ac WLAN adapter equipped with a hidden custom antenna.

- Through the support of typical WLAN adapters, the DT323RP should be able to detect all 802.11 access points in the vicinity for you to select the access point of your choice for connection.
- The SSID and WEP/WPA/WPA2 (if enabled) parameters on the DT323RP and the access points have to match. The SSID is case-sensitive and it is recommended that you enable WEP/WPA/WPA2 encryption (or advanced alternatives) for secure access.
- When WEP/WPA/WPA2 is enabled, you may need to consult your network administrator or your networking equipment literature to properly configure associated settings such as Authentication mode, etc.
- Refer to the access point operating manuals for setting up the 802.11 access points.

### USING THE MOBILE TABLET

#### Peripherals Support

Through its USB ports, the DT323RP supports a wide range of USB-based peripherals. These peripherals are applicable for software installation, applications storage, data storage, and system software recovery and updates.

#### For More Support

Users can download the Tablet Modules Basic Operation Guides from the DT Research website.

### To Hold the Tablet



Left hand: grip the left back side of the tablet with your left hand four index fingers, with thumb resting on the top of the back side of the tablet and palm securely against the back.

Right hand: grip the right back side of the tablet with your right hand four index fingers, with thumb resting on the top of the back side of the tablet and palm securely against the back.

### Replacing the SSD



Loosen the screw on the back side of the tablet.



Slide the latch to unlock the SSD door.



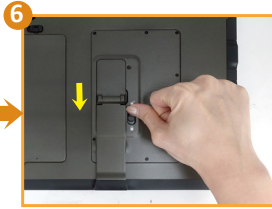
Pull the tape on the top of the SSD door to loosen the SSD.



Lift the SSD off the compartment



Fit another SSD into place.



Slide the latch to the locked position.



Lock the screw into the screw hole.

### Federal Communication Commission Interference

This equipment has been tested and found to comply with the limits for a Class B digital device, pursuant to Part 15 of the FCC Rules. These limits are designed to provide reasonable protection against harmful interference in a residential installation. This equipment generates, uses and can radiate radio frequency energy and, if not installed and used in accordance with the instructions, may cause harmful interference to radio communications. However, there is no guarantee that interference will not occur in a particular installation. If this equipment does cause harmful interference to radio or television reception, which can be determined by turning the equipment off and on, the user is encouraged to try to correct the interference by one of the following measures:

- Reorient or relocate the receiving antenna.
- Increase the separation between the equipment and receiver.
- Connect the equipment into an outlet on a circuit different from that to which the receiver is connected.
- Consult the dealer or an experienced radio/TV technician for help.

FCC Caution: Any changes or modifications not expressly approved by the party responsible for compliance could void the user's authority to operate this equipment.

This device complies with Part 15 of the FCC Rules.

Operation is subject to the following two conditions: (1) This device may not cause harmful interference, and (2) this device must accept any interference received, including interference that may cause undesired operation.

This device and its antenna(s) must not be co-located or operating in conjunction with any other antenna or transmitter.

This Class [B] digital apparatus complies with Canadian ICES-003.

Cet appareil numérique de la classe [B] est conforme à la norme NMB-003 du Canada.