

Options

The DT135BT is designed to work with a range of custom and off-the-shelf options to enhance its applicability for various deployments.

- Built-in wireless LAN, with external antenna

DT135BT

BASIC OPERATION GUIDE

ENGLISH



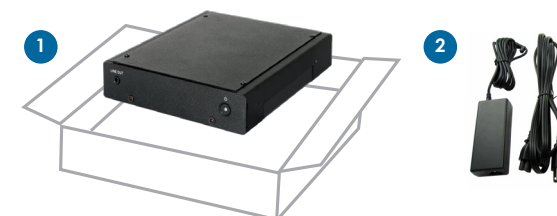
Introduction

Thank you for acquiring the latest addition to DT Research's line of Embedded Controllers/ Systems - the DT135BT, featuring compact, robust construction powered by the high-performance and energy efficient Intel® Celeron® quad core processor. The DT135BT supports major embedded operating systems as well as Microsoft® Windows® operating systems and provides complete solutions for a variety of computing needs. The user is offered a choice of software solutions on a platform characterized by the following:

- High-integration and energy-efficient processor technology
- Expanded graphics capabilities for multimedia applications
- Robust construction for reliable operation
- Cost-effective computing in compact and versatile packaging

Package Contents

1. DT135BT
2. AC/DC Power Adapter
3. Basic Operation Guide

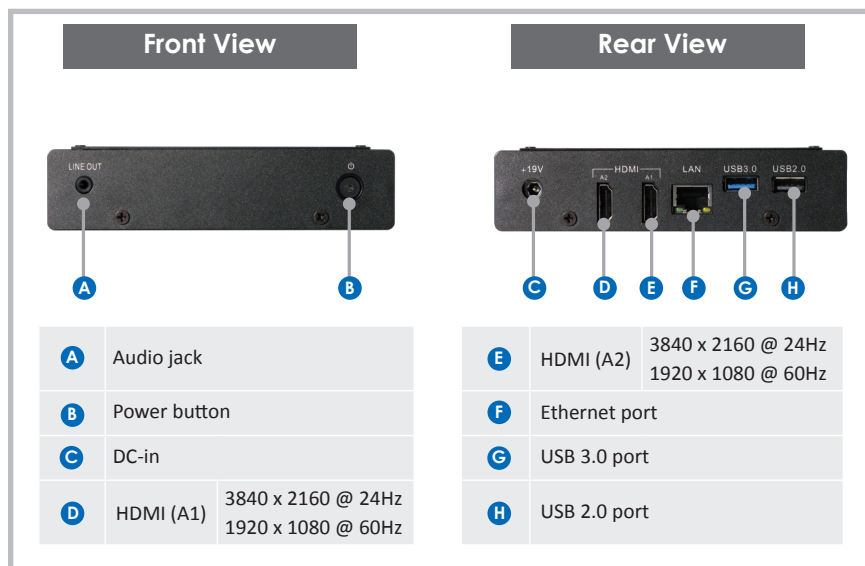


NOTE: The actual package contents may vary depending on the configuration acquired.

Precautions

- Always exercise care when operating and handling the DT135BT.
- Never disassemble any portion of the enclosure as this will void any product warranty on the DT135BT.
- Do not use any AC/DC adapter other than the one provided with the DT135BT or acquired from the manufacturer or its partners.
- In the unlikely event that smoke, abnormal noise, or strange odor is present, immediately power down the DT135BT and disconnect all power sources.
- Please report the problem to your device provider immediately.

The DT135BT



Powering ON and OFF

The Power Button is located in the front of the DT135BT. The Power Button may be configured to function differently depending on the power options of the operating system. In general, to turn the DT135BT on, push and release the Power Button on the front bezel. The power LED will be lit (blue) and the corresponding interface will be displayed on the display monitor.

To turn off the device, again depending on software operating system, push and release the Power Button or use a software shutdown interface. In the event of system lockup, the Power Button may be used to perform a reset on the device. To do that, push and hold the Power Button for at least 4 seconds. The system will shut down and all unsaved work may be lost. Pushing on the Power Button again will restart the device.

Device Ports

The DT135BT features an optimal set of I/O ports while preserving the compact size of the system. The HDMI connectors, network (10/100/1000 BaseT Ethernet), and power ports are supplemented by a set of USB (2) and audio (1) ports. Through its USB ports, the DT135BT supports a wide range of USB-based peripherals, applicable in providing the means for software installation, application storage, data storage, and system software recovery and updates.

Memory and Storage

The DT135BT may be available in storage configurations ranging from 32GB to 512GB Flash. Depending on base software configuration, the user may use the internal memory of the DT135BT for user's installed software and storage. The user may also supplement storage space with USB-based peripherals such as flash disks. RAM capacity is from 4GB to 8GB.